

INDEX HM  
SCAN \_\_\_\_\_  
FOLLOW UP \_\_\_\_\_  
PROOF \_\_\_\_\_

Instrument #: 2023-1429  
08/21/2023 08:24:35 AM Total Pages: 1  
PLC PLAT COR CERT  
Recording Fee: \$0.00 Transfer Tax: \$0  
Sara Meseck, Recorder, Crawford County Iowa



PREPARED BY: PAUL ASSMAN-CRAWFORD COUNTY ENGINEER'S OFFICE-COURTHOUSE-DENISON, IA.-712-263-2449

### UNITED STATES PUBLIC LAND SURVEY CORNER CERTIFICATE OF

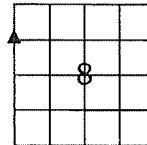
LAND SURVEY MONUMENT SITUATED IN HAYES TOWNSHIP, NORTHWEST CORNER SW 1/4 NW 1/4 OF SECTION  
8, T-83N, R-37W OF THE FIFTH P.M. CRAWFORD COUNTY, IOWA.

PREVIOUSLY RECORDED AS NO. 2007-1331

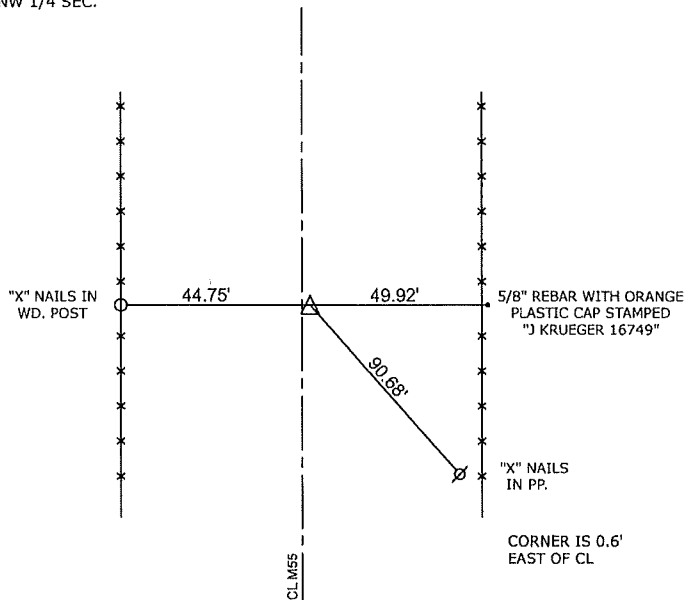
#### MONUMENT DESCRIPTION AND REMARKS

NORTHWEST COR SW 1/4 NW 1/4 SEC. 8-83-37

FOUND PK NAIL  
COUNTY RESURFACED ROAD AND SET 1/2" X 4" CARRIAGE  
BOLT 1/4" BELOW SURFACE AND RETIED



NORTHWEST CORNER SW 1/4 NW 1/4 SEC.  
8-83-37



ALL TIE DISTANCES ARE MEASURED HORIZONTALLY USING GPS

#### CERTIFICATION:

I HEREBY CERTIFY THAT THIS LAND SURVEYING DOCUMENT WAS PREPARED AND THE RELATED SURVEY WORK WAS PERFORMED BY ME OR UNDER MY DIRECT PERSONAL SUPERVISION AND THAT I AM A DULY LICENSED LAND SURVEYOR UNDER THE LAWS OF THE STATE OF IOWA.

Signature

8/10/23  
Date of Survey

PAUL J. ASSMAN  
Typed Name

11982  
L.S. No.

12-31-24  
License Renewal Date

Pages covered by this seal 1

