

UNITED STATES PUBLIC LAND SURVEY CORNER CERTIFICATE OF

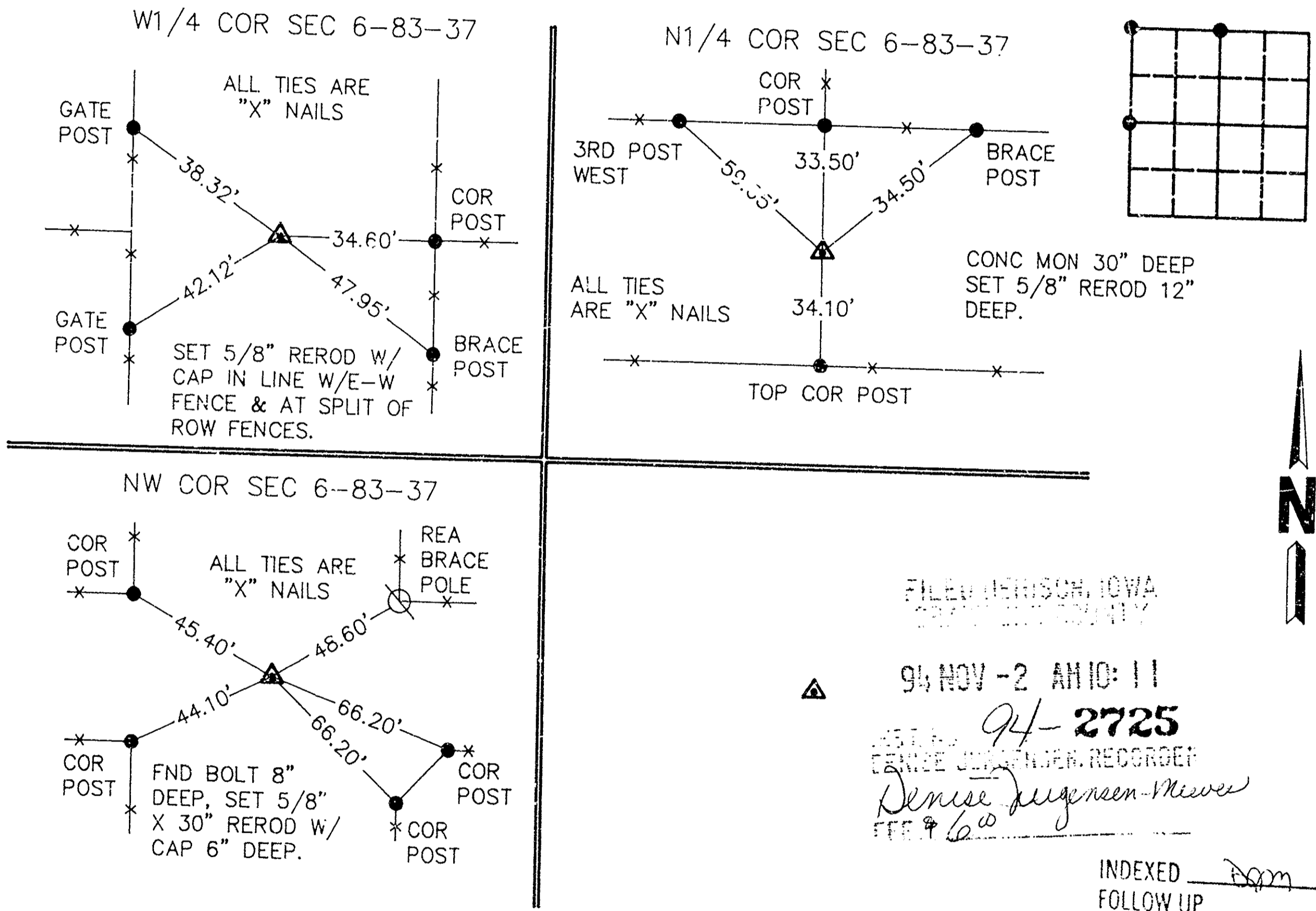
Land Survey Monuments in Section 6, Township 83, Range 37, of the Fifth Principal Meridian, CRAWFORD County, Iowa.
 Previously recorded in NONE (book, page, document number, etc.) in County Recorder's Office.

(Show reason for preparing this certificate, the evidence and detailed procedures used in establishing the corner positions and monumentation found or placed.)

Monument Description and Remarks:

PLAN - VIEW

(Show a minimum of three reference ties to durable physical objects, relevant monuments and physical conditions that will enable recovery of the corner.)



FILED JEFFERSON, IOWA
CRAWFORD COUNTY

94 NOV -2 AM 10:11

94-2725
 DENISE JENSEN-RECORDED
 Denise Jensen-Mewer
 FEB 9 6 00

INDEXED EQM
 FOLLOW UP _____
 PROOFED _____

I hereby certify that this survey work was completed and this certificate was prepared by me or under my direct personal supervision and that I am a duly registered land surveyor under the laws of the state of Iowa.

Signature: Warder C Hillhouse Jr
 Name typed or printed: Warder C. Hillhouse, Jr.
 Date: 10/31/94 Reg. No. 6806



SEAL

List Corners to be Indexed			
Corners	Section	Twp	Range
N1/4 COR	6	83	37
W1/4 COR	6	83	37
NW COR	6	83	37