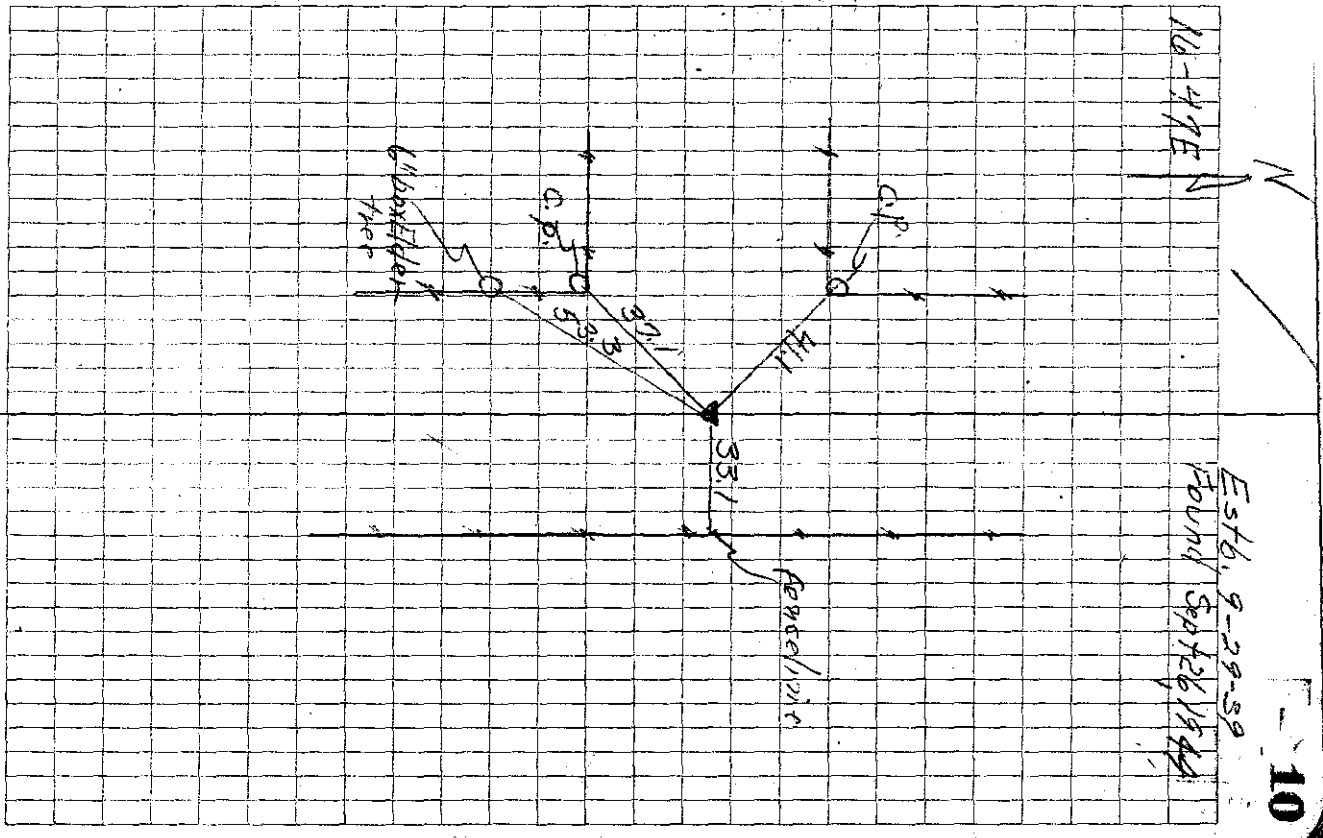


32	33	9-29-39-E	Estb. corner by
5	4	Ties from	BR# 10 P# 46
		Set C.M.	

Ties from v-spts in con posts
 411 SE from con post
 371 NE " " "
 533 NNE " " 6" box Elder stump
 331 W " " fence line



Estb. 9-28-39
 Found Sept 26 1944