

INDEXED
 FOLLOW UP
 PROOFED
 SCANNED

REC011629



Crawford County Recorder Denise Meeves
 FEE BOOK 2006-2397 8/18/2006 @ 10:31AM
 PLC PLAT CORNER CERBook: Page: #: 1
 Total Fees: \$7.00

RETURN TO SNYDER & ASSOCIATES, INC. 2727 SW SNYDER ROAD, ANKENY, IOWA 50023 (888) 964-2020

UNITED STATES PUBLIC LAND SURVEY CORNER CERTIFICATE OF

Land Survey Monuments situated in Section 2, Township 83, Range 37, of the Fifth Principal Meridian, CRAWFORD County, Iowa.
 Previously recorded in N/A in County Recorder's Office.
 (book, page, document number, ect.)

(Show reason for preparing this certificate, the evidence and detailed procedures used in establishing the corner positions and monumentation found or placed.)

Monument Description and Remarks:

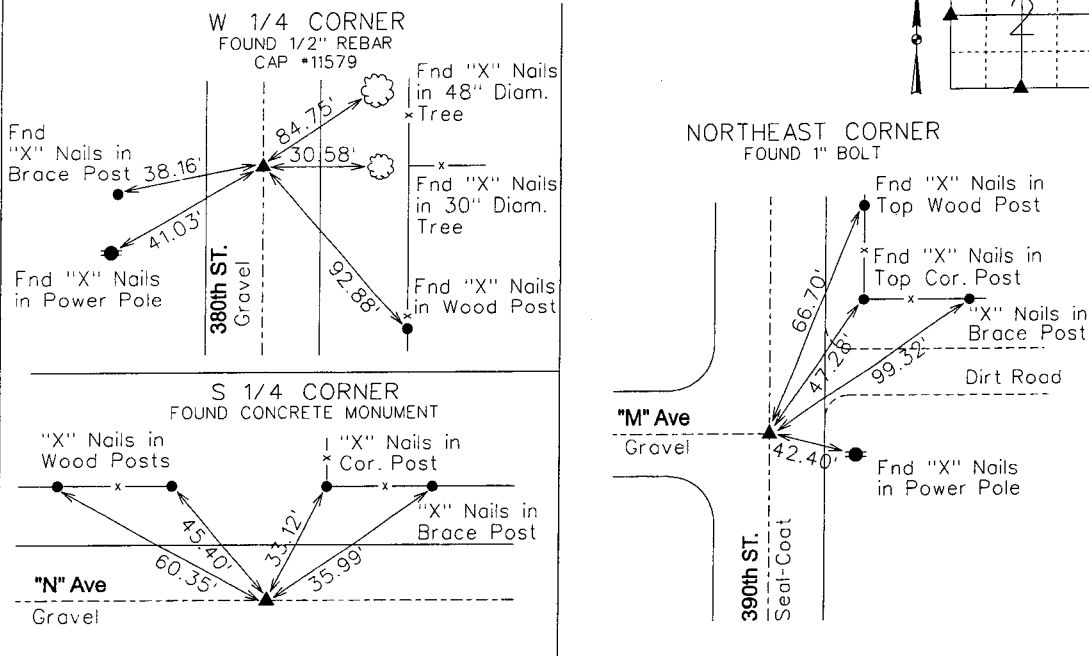
WEST 1/4 CORNER - FOUND 1/2" REBAR CAP #11579 IN Q 380th STREET USING EXISTING TIES AND RETIED SECTION CORNER.

NORTHEAST CORNER - FOUND 1" BOLT IN CENTERLINE 390th STREET USING COUNTY ENGINEER SECTION CORNER TIES AND RETIED SECTION CORNER.

SOUTH 1/4 CORNER - FOUND CONCRETE MONUMENT IN CENTERLINE "N" AVENUE AT SURFACE. NO EXISTING SECTION TIES REMAIN; RETIED SECTION CORNER.

Plan-View

(Show a minimum of three reference ties to durable physical objects, relevant monuments and physical conditions that will enable recovery of the corner.)



List Corners to be Indexed

Corners	Section	Twp	Range
W 1/4 COR	2	83	37
E 1/4 COR	3	83	37
NE COR	2	83	37
SE COR	35	84	37
SW COR	36	84	37
NW COR	1	83	37
S 1/4 COR	2	83	37
N 1/4 COR	11	83	37

LICENSED LAND SURVEYOR
 MICHAEL G. GEIER
 11804
 IOWA

I hereby certify that this land surveying document was prepared and the related surveying work was performed by me or under my direct supervision and that I am a duly licensed Land Surveyor under the laws of the State of Iowa.

Michael G. Geier 8-10-06
 Michael G. Geier, PLS Date
 License Number 11804
 My License Renewal Date is December 31, 2007

Pages or sheets covered by this seal:
 SHEET 1 OF 1

TECH: JDP

PN: 83-37-02 (105.1255)

DATE: 04/11/06