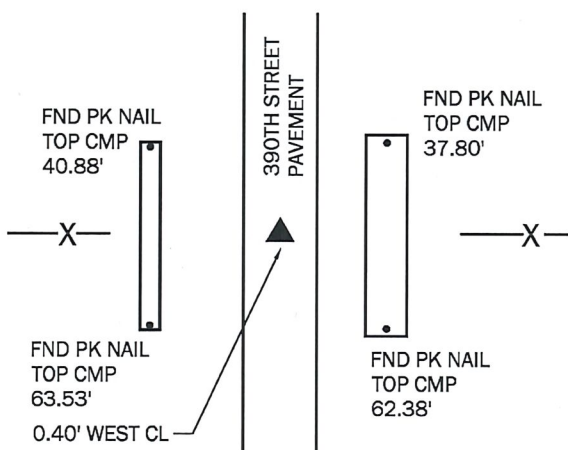
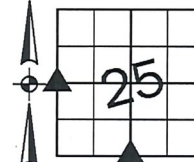


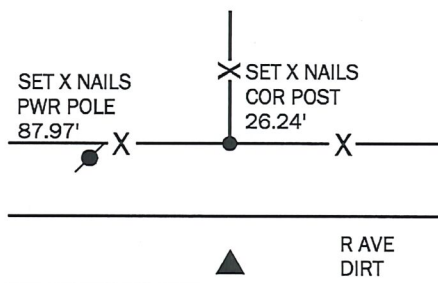
PREPARED BY AND RETURN TO: MIKE SCHULTE, SCHULTE SURVEYING, INC., 2003 390TH STREET, WESTSIDE, IA 51467 (712) 790-3489

UNITED STATES PUBLIC LAND SURVEY CORNER CERTIFICATE OF
 LAND SURVEY MONUMENTS SITUATED IN SECTION 25, TOWNSHIP 83 NORTH, RANGE 37 WEST, OF THE FIFTH
 PRINCIPAL MERIDIAN, CRAWFORD COUNTY, IOWA. PREVIOUSLY RECORDED IN SEE BELOW IN COUNTY
(book, page instrument number)
 RECORDER'S OFFICE.

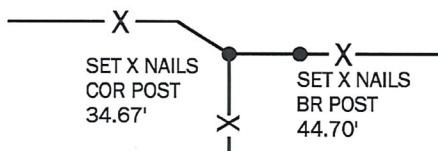
W1/4 CORNER
 FND CARRIAGE BOLT
 NORTHING EASTING
 7228319.39 16669051.27



S1/4 CORNER
 SET 5/8" REBAR YPC 17979 12" DEEP
 NORTHING EASTING
 7225661.08 16671683.19



USED TIES RECORDED INST 2000-0184 TO FIND CARRIAGE BOLT 0.4' WEST OF CENTER LINE. THERE ARE A FEW CHANGES TO THE RECORDED TIES, SO ADDITIONAL REFERENCES WERE FOUND AND CORNER RETIED.



NO RECORDED TIES OF RECORD, NOR WHERE THERE ANY SURVEYS FOUND REFERENCING THE CORNER. ENGINEER'S TIES INDICATE A LARGE HOLE WAS DUG IN 8-20-1940 BUT NOTHING WAS FOUND OR SET. SEARCHED FOR A MONUMENT IN CASE AN UNDOCUMENTED CORNER WAS SET, BUT DIDN'T FIND ANYTHING. RESET OBLITERATED CORNER USING EXISTING FENCES AS EVIDENCE.

*All distances are measured horizontally unless noted.

LIST CORNERS TO BE INDEXED

CORNER	SECTION	TWP	RANGE
W1/4 CORNER	25	83	37
E1/4 CORNER	26	83	37
S1/4 CORNER	25	83	37
N1/4 CORNER	36	83	37
XX	XX	XX	XX
XX	XX	XX	XX
XX	XX	XX	XX

BASIS OF BEARING

laRCS ZONE 6 - US SURVEY FEET
 laRTN DERIVED - NAD83(2011)(EPOCH 2010.00)

I HEREBY CERTIFY THAT THIS LAND SURVEYING DOCUMENT WAS PREPARED BY ME OR UNDER MY DIRECT PERSONAL SUPERVISION AND THAT I AM A DULY LICENSED PROFESSIONAL LAND SURVEYOR UNDER THE LAWS OF THE STATE OF IOWA.

Mike Schulte
 MIKE SCHULTE
 DATE 2019/03/21
 LICENSE NUMBER: 17979
 LICENSE RENEWAL DATE IS DECEMBER 31, 2019
 PAGES COVERED BY THIS SEAL: 1 OF 1

