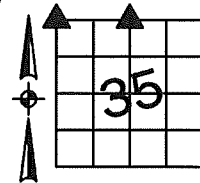


Sara Meseck, RECORDER
 Crawford County, Iowa
 Instr. Number: 2023-0299
 Recorded: 2/16/2023 at 2:17:17.0 PM
 Pages 1
 County Recording Fee: \$7.00
 Iowa E-Filing Fee: \$3.13
 Combined Fee: \$10.13
 Revenue Tax:

PREPARED BY AND RETURN TO: MIKE SCHULTE, SCHULTE SURVEYING, INC., 2003 390TH STREET, WESTSIDE, IA 51467 (712) 790-3489

UNITED STATES PUBLIC LAND SURVEY CORNER CERTIFICATE OF
 LAND SURVEY MONUMENTS SITUATED IN SECTION 35, TOWNSHIP 83 NORTH, RANGE 37 WEST, OF THE FIFTH
 PRINCIPAL MERIDIAN, CRAWFORD COUNTY, IOWA. PREVIOUSLY RECORDED IN SEE BELOW IN COUNTY
(book, page instrument number)
 RECORDER'S OFFICE.

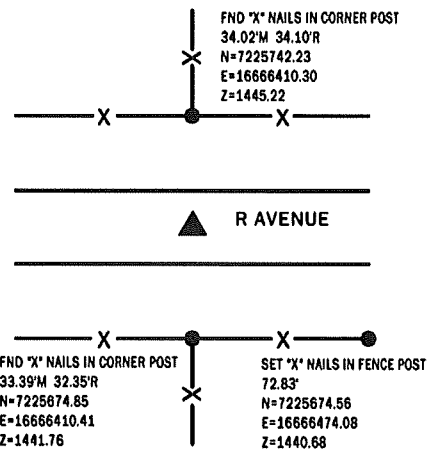
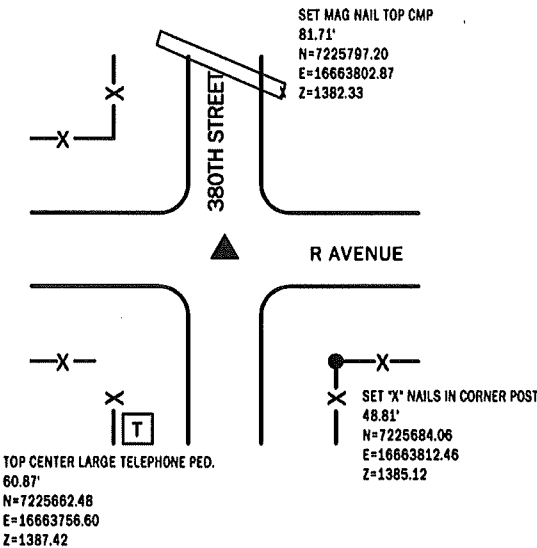


NW CORNER
 FND 5/8" REBAR

N=7225719.19 E=16663778.56 Z=1384.73
 USED CERTIFICATE RECORDED IN INSTRUMENT #2002-3040 AND A
 METAL LOCATOR TO FIND A 5/8" REBAR. VERIFIED WITH
 SURROUNDING FIELD EVIDENCE.
 THIS CERTIFICATE IS BEING FILED TO UPDATE THE REFERENCE TIES.

N1/4 CORNER
 FND 5/8" REBAR OPC #5798

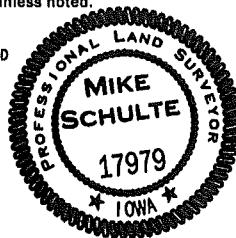
N=7225708.22 E=16666409.49 Z=1442.10
 USED CERTIFICATE RECORDED IN INSTRUMENT #2002-3039 AND
 A METAL LOCATOR TO FIND A 5/8" REBAR OPC #5798 3" DEEP.
 VERIFIED WITH 2 REMAINING TIES AND ACCEPTED.
 THIS CERTIFICATE IS BEING FILED TO UPDATE THE REFERENCE TIES.



*All distances are measured horizontally unless noted.

I HEREBY CERTIFY THAT THIS LAND SURVEYING DOCUMENT WAS
 PREPARED BY ME OR UNDER MY DIRECT PERSONAL SUPERVISION AND
 THAT I AM A DULY LICENSED PROFESSIONAL LAND SURVEYOR UNDER
 THE LAWS OF THE STATE OF IOWA.

Mike Schulte
 MIKE SCHULTE
 LICENSE NUMBER: 17979
 LICENSE RENEWAL DATE IS DECEMBER 31, 2023
 PAGES COVERED BY THIS SEAL: 1 OF 1
 DATE: 2023/02/13



LIST CORNERS TO BE INDEXED

CORNER	SECTION	TWP	RANGE
N1/4 CORNER	35	83	37
S1/4 CORNER	26	83	37
NW CORNER	35	83	37
NE CORNER	34	83	37
SE CORNER	27	83	37
SW CORNER	26	83	37

BASIS OF BEARING

16RCS ZONE 8- US SURVEY FEET
 16RTN DERIVED - NAD83(2011)(EPOCH 2010.00)

SCHULTE SURVEYING, INC.

DRAWN BY: MLS/SLG
 PROJ NUMBER: 23-009