

PREPARED BY - H. DALE WIGHT - CRAWFORD COUNTY ENGINEER - COURTHOUSE DENISON, IOWA 51442 (712)263-2449

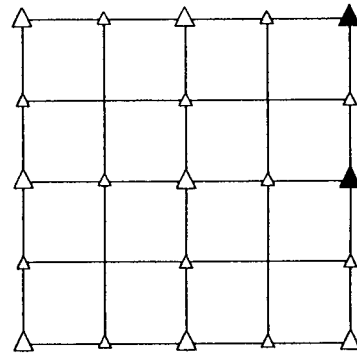
# UNITED STATES PUBLIC LAND SURVEY CORNER CERTIFICATE OF

LAND SURVEY MONUMENT SITUATED IN SECTION 35, T 83 N, R 37 W OF  
THE 5TH P.M., CRAWFORD COUNTY, IOWA.  
PREVIOUSLY RECORDED IN BOOK \_\_\_\_\_, PAGE \_\_\_\_\_, OTHER \_\_\_\_\_

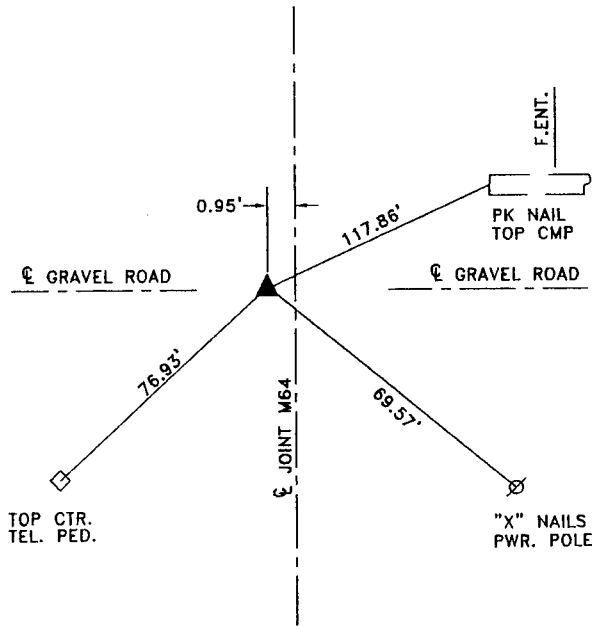
## MONUMENT DESCRIPTION AND REMARKS

NE CORNER - SET BOLT FLUSH WITH ASPHALT  
FROM CONSTRUCTION TIES

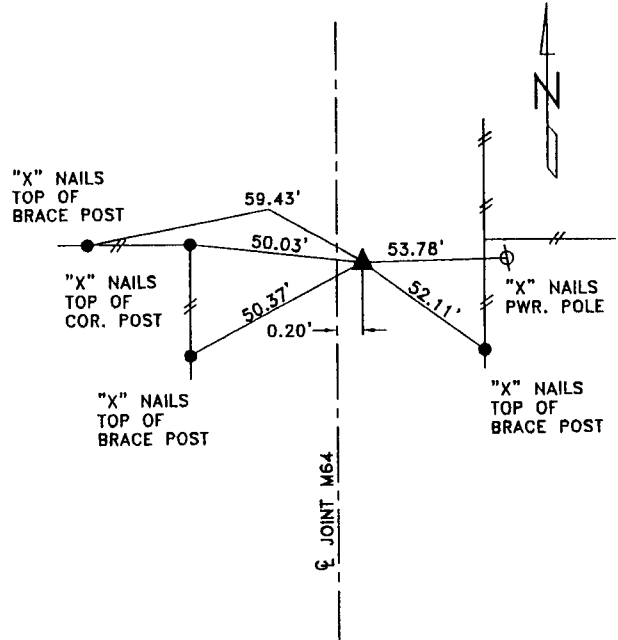
E1/4 CORNER - SET BOLT FLUSH WITH ASPHALT  
FROM CONSTRUCTION TIES  
CORNER IS 2.55' SOUTH OF EAST FENCE AND  
1.90' SOUTH OF WEST FENCE



## PLAN VIEW SHOWING RELATIVE LOCATION OF MONUMENT AND REFERENCE POINTS.



DISTANCES PLUMB CHAINED  
NE CORNER SECTION 35-83-37



DISTANCES PLUMB CHAINED  
E1/4 CORNER SECTION 35-83-37

I hereby certify that this engineering document or  
land surveying document was prepared by me or  
under my direct personal supervision and that I am  
a duly licensed Professional Engineer and a duly  
licensed Land Surveyor, under the laws of the  
State of Iowa.

SIGNED \_\_\_\_\_ DATE (Month, Day, Year)

*H. Dale Wight* 1-24-2000

H. DALE WIGHT, P.E. & L.S. Iowa Reg. No. 5798

My license renewal date is December 31, 2000

