

INDEXED g  
 FOLLOW UP g  
 PROCOPED g  
 SCANNED g

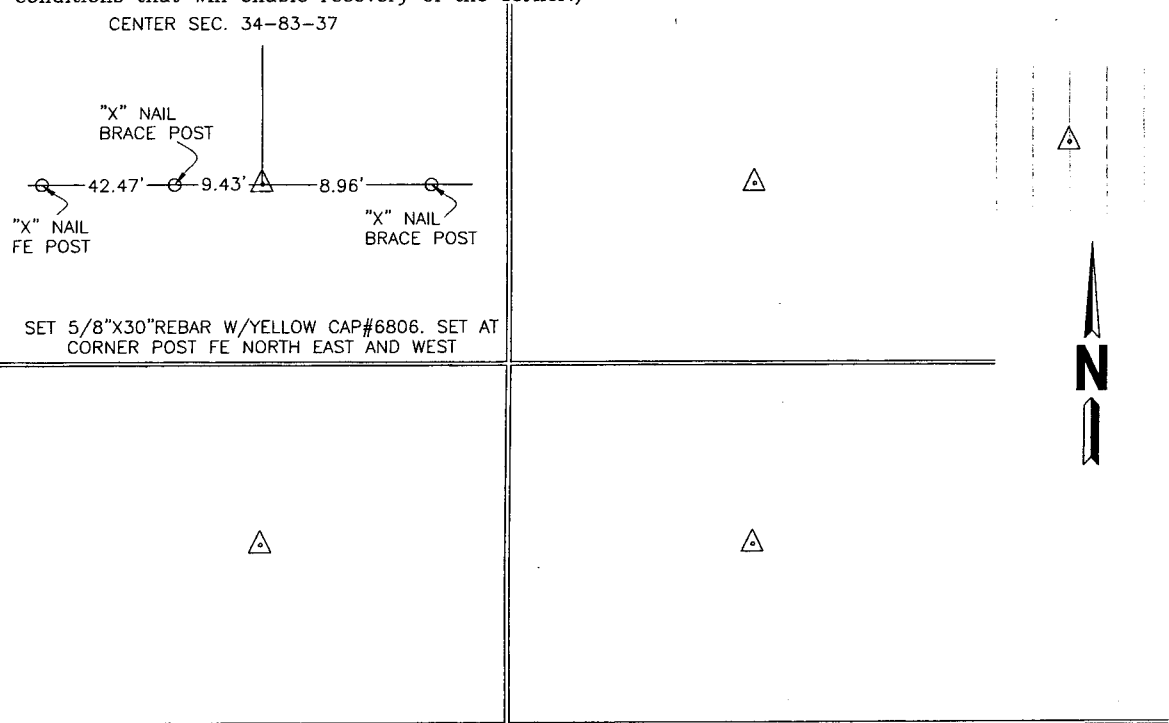


Crawford County Recorder Denise Meeves  
 Fee Book 2006-3557 REC012940  
 12/22/2006 #1030AM # Pages 1  
 PLC PLAT CORNER CER  
 Total Fees: \$7.00

WARDER C. HILLHOUSE, JR. MHF ENGINEERING P.C. 300 W. MCKINLEY JEFFERSON, IA. (515)386-4101  
**UNITED STATES PUBLIC LAND SURVEY CORNER CERTIFICATE OF**  
 Land Survey Monuments in Section 34, Township 83, Range 37, of the Fifth Principal Meridian, CRAWFORD County, Iowa.  
 Previously recorded in \_\_\_\_\_ in County Recorder's Office.  
 (Show reason for preparing this certificate, the evidence and detailed procedures used in establishing the corner positions and monumentation found or placed.)  
 Monument Description and Remarks: CORNER WAS LOCATED FOR SURVEY WORK IN SECTION.

**PLAN - VIEW**

(Show a minimum of three reference ties to durable physical objects, relevant monuments and physical conditions that will enable recovery of the corner.)



I hereby certify that this land surveying document and the related survey work was performed by me or under my direct personal supervision and that I am a duly licensed land surveyor under the laws of the state of Iowa.  
 Signature: Warder C. Hillhouse Jr.  
 Warder C. Hillhouse, Jr.  
 Date: 12/19/06 Lic. No. 6806  
 License Renewal Dec. 31, 2007  
 Date Surveyed: 12/14/06

Seal

List Corners to be Indexed

Corners	Section	Twp	Range
CENTER	34	83	37

File No. 06221-1  
 M.H.F. ENGINEERING, P.C.  
 ENGINEERS - LAND SURVEYORS  
 Jefferson, Iowa 50129 Ph. (515)386-4101