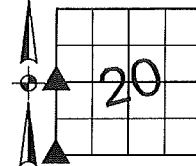


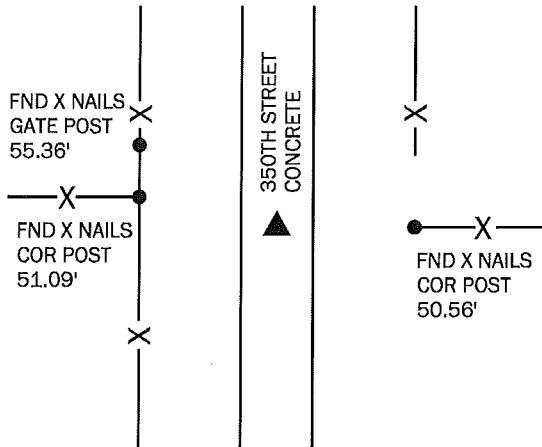
Denise Meeves RECORDER
 Crawford County, Iowa
 Instr. Number: 2018-0883
 Recorded: 4/27/2018 at 8:41:36.0 AM
 Pages 1
 Fee Amount: \$7.00
 Revenue Tax:

PREPARED BY AND RETURN TO: MIKE SCHULTE, SCHULTE SURVEYING, INC., 2003 390TH STREET, WESTSIDE, IA 51467 (712) 790-3489

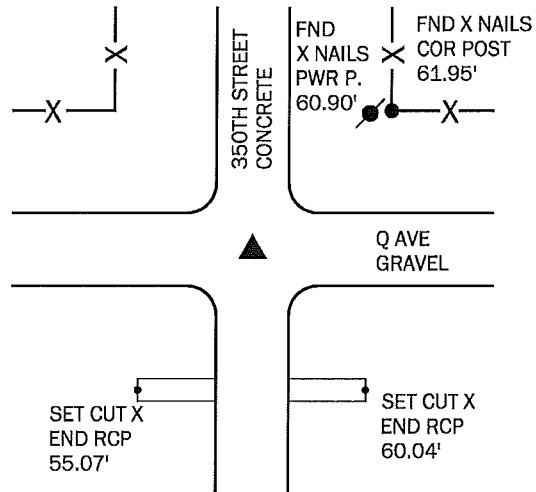
UNITED STATES PUBLIC LAND SURVEY CORNER CERTIFICATE OF
 LAND SURVEY MONUMENTS SITUATED IN SECTION 20, TOWNSHIP 83 NORTH, RANGE 37 WEST, OF THE FIFTH
 PRINCIPAL MERIDIAN, CRAWFORD COUNTY, IOWA. PREVIOUSLY RECORDED IN SEE BELOW IN COUNTY
(book, page instrument number)
 RECORDER'S OFFICE.



W1/4 CORNER
 SET MAG NAIL
 N: 7233604.25 E: 16648029.14



SW CORNER
 FND LEAD PLUG
 N: 7230984.17 E: 16648001.19

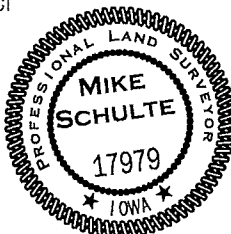


NO RECORDED TIES OR COUNTY TIES. M55 GRADING PLANS SHOW A FOUND REBAR WITH TIES THAT DO NOT MATCH CURRENT FENCES. USED PROJECT CL INFORMATOIN TO RESET CORNER.

USED TIES RECORDED IN FEE BOOK 2008-0036 TO FIND LEAD PLUG. EXISTING TIES MATCH BUT SOME FENCE HAS BEEN REMOVED AND TIES ARE NOW MISSING. ADDED TIES TO CULVERT.

I HEREBY CERTIFY THAT THIS LAND SURVEYING DOCUMENT WAS PREPARED BY ME OR UNDER MY DIRECT PERSONAL SUPERVISION AND THAT I AM A DULY LICENSED PROFESSIONAL LAND SURVEYOR UNDER THE LAWS OF THE STATE OF IOWA.

Mike Schulte
 MIKE SCHULTE DATE 2018/04/25
 LICENSE NUMBER: 17979
 LICENSE RENEWAL DATE IS DECEMBER 31, 2019
 PAGES COVERED BY THIS SEAL: 1 OF 1



*All distances are measured horizontally unless noted.

LIST CORNERS TO BE INDEXED

CORNER	SECTION	TWP	RANGE
W1/4 COR	20	83	37
E1/4 COR	19	83	37
SW COR	20	83	37
NW COR	29	83	37
NE COR	31	83	37
SE COR	30	83	37

BASIS OF BEARING

IaRCS ZONE 6 - US SURVEY FEET
 IaRTN DERIVED - NAD83(2011)(EPOCH 2010.00)

SCHULTE SURVEYING, INC.

DRAWN BY: MLS