

INDEXED KM
 FOLLOW UP _____
 PROOFED _____
 SCANNED _____

Instrument #: 2018-1950
 09/19/2018 08:27:33 AM Total Pages: 1
 PLC PLAT CORNER CER
 Recording Fee: \$0.00 Transfer Tax: \$0
 Denise Meeves, Recorder, Crawford County Iowa



PREPARED BY: PAUL ASSMAN-CRAWFORD COUNTY ENGINEER'S OFFICE-COURTHOUSE-DENISON, IA.-712-263-2449

UNITED STATES PUBLIC LAND SURVEY CORNER CERTIFICATE OF

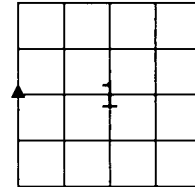
LAND SURVEY MONUMENT SITUATED IN HAYES TOWNSHIP, THE WEST 1/4 CORNER OF SECTION 1, T-83N,
R-37W OF THE FIFTH P.M. CRAWFORD COUNTY, IOWA.

PREVIOUSLY RECORDED AS NO. 1996-0597

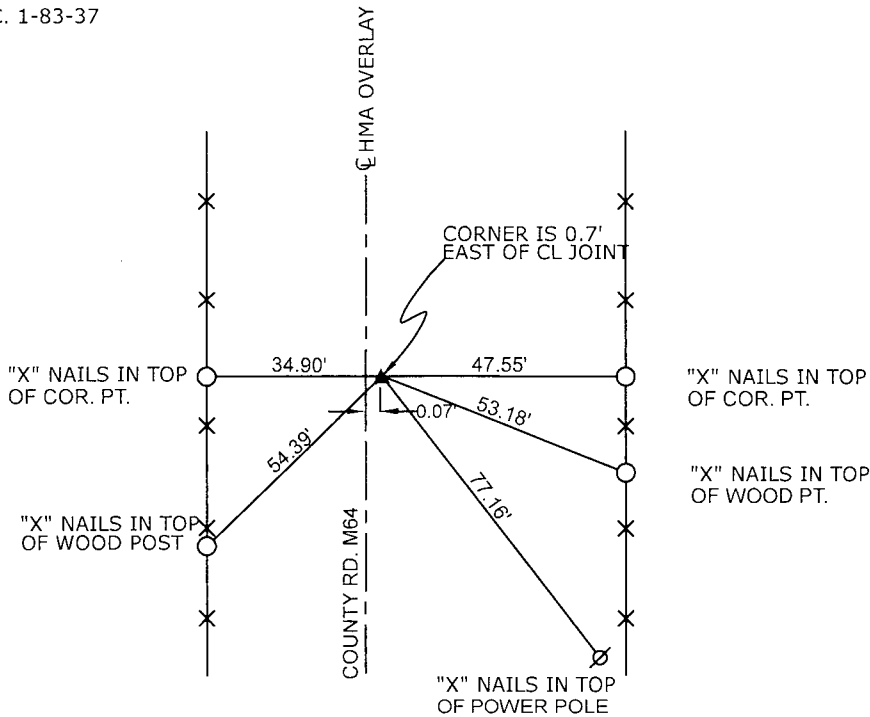
MONUMENT DESCRIPTION AND REMARKS

WEST 1/4 CORNER SEC. 1-83-37

FOUND 1" BOLT AT SURFACE IN ACCORDANCE WITH PREVIOUS TIES. COUNTY RESURFACED ROAD, PROJECT NO. FM-C024(117). SET 1/2" CARRIAGE BOLT AT SURFACE AND RETIED.



WEST 1/4 CORNER SEC. 1-83-37



ALL DISTANCES ARE SLOPE CHAINED

CERTIFICATION:

I HEREBY CERTIFY THAT THIS LAND SURVEYING DOCUMENT WAS PREPARED AND THE RELATED SURVEY WORK WAS PERFORMED BY ME OR UNDER MY DIRECT PERSONAL SUPERVISION AND THAT I AM A DULY LICENSED LAND SURVEYOR UNDER THE LAWS OF THE STATE OF IOWA.

 Signature	<u>7/31/18</u> Date of Survey	
PAUL J. ASSMAN	11982	12-31-18
Typed Name	L.S. No.	License Renewal Date
Pages covered by this seal <u>1</u>		

