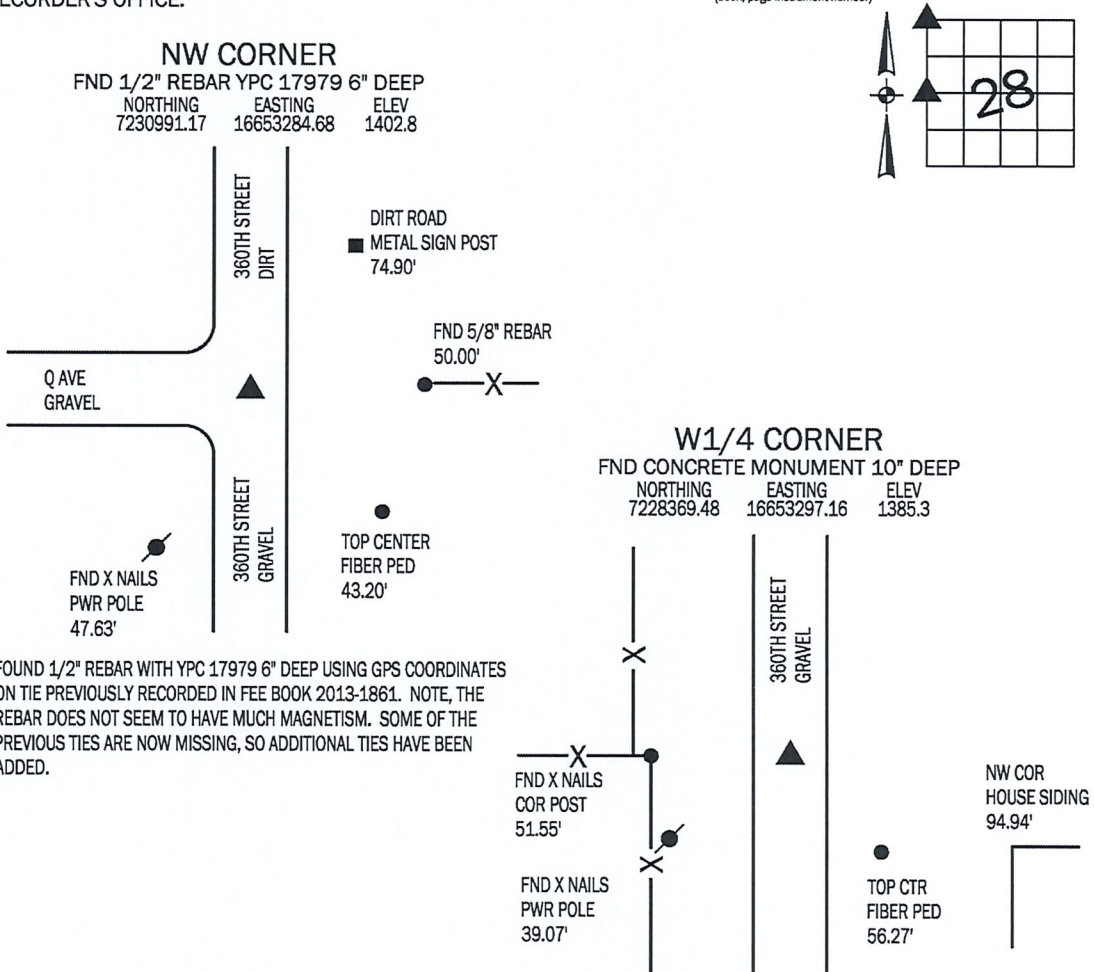


Denise Meeves **RECORDER**  
 Crawford County, Iowa  
 Instr. Number: 2019-1532  
 Recorded: 8/27/2019 at 12:51:24.0 PM  
 Pages 1  
 County Recording Fee: \$7.00  
 Iowa E-Filing Fee: \$3.13  
 Combined Fee: \$10.13  
 Revenue Tax:

PREPARED BY AND RETURN TO: MIKE SCHULTE, SCHULTE SURVEYING, INC., 2003 390TH STREET, WESTSIDE, IA 51467 (712) 790-3489

**UNITED STATES PUBLIC LAND SURVEY CORNER CERTIFICATE OF**

LAND SURVEY MONUMENTS SITUATED IN SECTION 28, TOWNSHIP 83 NORTH, RANGE 37 WEST, OF THE FIFTH PRINCIPAL MERIDIAN, CRAWFORD COUNTY, IOWA. PREVIOUSLY RECORDED IN SEE BELOW IN COUNTY RECORDER'S OFFICE.  
(book, page instrument number)



FOUND 1/2" REBAR WITH YPC 17979 6" DEEP USING GPS COORDINATES ON TIE PREVIOUSLY RECORDED IN FEE BOOK 2013-1861. NOTE, THE REBAR DOES NOT SEEM TO HAVE MUCH MAGNETISM. SOME OF THE PREVIOUS TIES ARE NOW MISSING, SO ADDITIONAL TIES HAVE BEEN ADDED.

USED TIES PREVIOUSLY RECORDED TIE IN INST 2017-1479 TO FIND CONCRETE MONUMENT 10" DEEP. SET MAG NAIL IN TOP CENTER AND ADDED AN ADDITIONAL TIE SINCE ONE IS MISSING.

\*All distances are measured horizontally unless noted.

**LIST CORNERS TO BE INDEXED**

CORNER	SECTION	TWP	RANGE
NW COR	28	83	37
SW COR	21	83	37
SE COR	20	83	37
NE COR	29	83	37
W1/4 COR	28	83	37
E1/4 COR	29	83	37

**BASIS OF BEARING**

laRCS ZONE 6 - US SURVEY FEET  
 laRTN DERIVED - NAD83(2011)(EPOCH 2010.00)

I HEREBY CERTIFY THAT THIS LAND SURVEYING DOCUMENT WAS PREPARED BY ME OR UNDER MY DIRECT PERSONAL SUPERVISION AND THAT I AM A DULY LICENSED PROFESSIONAL LAND SURVEYOR UNDER THE LAWS OF THE STATE OF IOWA.

*Mike Schulte*  
 MIKE SCHULTE  
 DATE 2019/08/27  
 LICENSE NUMBER: 17979  
 LICENSE RENEWAL DATE IS DECEMBER 31, 2019  
 PAGES COVERED BY THIS SEAL: 1 OF 1



**SCHULTE SURVEYING, INC.**

DRAWN BY: MLS  
 PROJ NUMBER: 19-039