

Crawford County Recorder
 Denise Meeves
Fee Book 2013-1588
 07/10/2013 010:25AM
 PLC PLAT CORNER CER
 Book: Page: # Pages: 1
 Total Fees: \$7.00

This document prepared by: Semke & Associates - 712-792-2276
 Micheal G. Semke, L.S. #10318 - 716 N. Crawford St. - Carroll, Iowa

UNITED STATES PUBLIC LAND SURVEY CORNER CERTIFICATE
 OF

Land Survey Monuments situated in Section 21, Township 83 North, Range 37
 West, of the Fifth Principal Meridian, Crawford County, Iowa.
 Previously recorded in Book , Page in County Recorder's Office.

(Show reason for preparing this certificate, the evidence and detailed procedures used in establishing the corner positions and monumentation found or placed.)

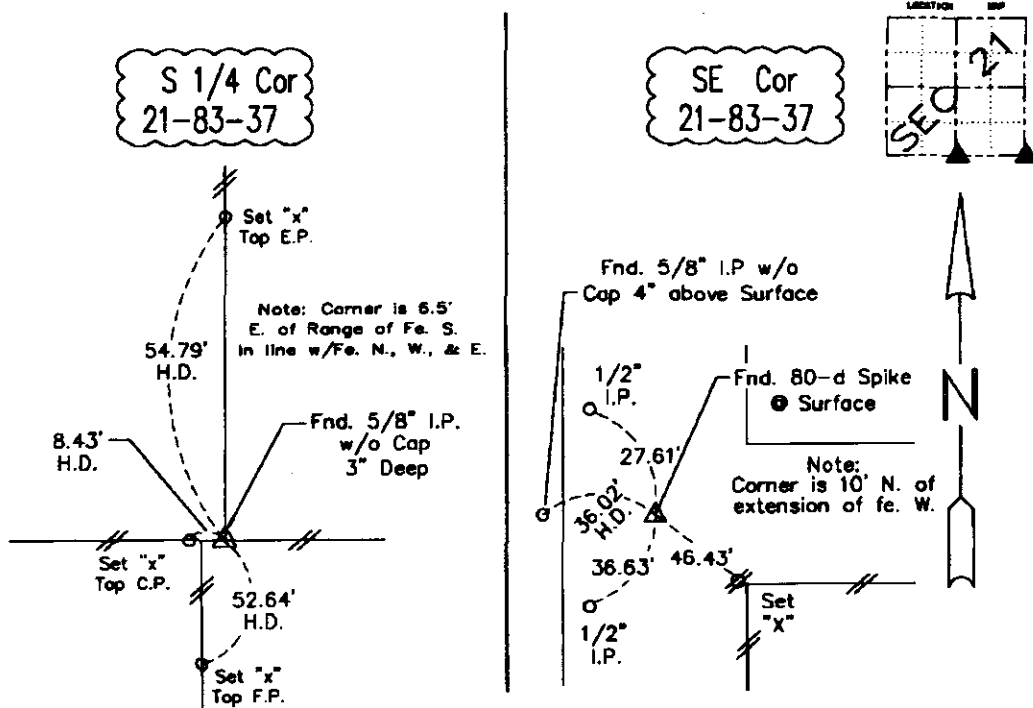
S 1/4 Corner Found 5/8" I.P. w/o Cap - 3" Deep
Corner is 6.5' East of Range of Fence S.
and in line with Fences N., W., & E.

SE Corner Found 80-d Spike on Top of Concrete
Monument - 10" Deep

Note: All pins set are 1/2" x 24" Rerod w/Yellow Cap #10318 unless noted otherwise.

PLAN - VIEW

(Show a minimum of three reference ties to durable physical objects, relevant monuments and physical conditions that will enable recovery of the corner.)



Note: All ties slope chained unless noted otherwise - H.D. = Horz. Distance

I HEREBY CERTIFY THAT THIS LAND SURVEYING DOCUMENT WAS PREPARED AND RELATED SURVEY WORK WAS PERFORMED BY ME OR UNDER MY DIRECT PERSONAL SUPERVISION AND THAT I AM A DULY LICENSED LAND SURVEYOR UNDER THE LAWS OF THE STATE OF IOWA

Micheal G. Semke 5/15/13
 Signature Date
 Micheal G. Semke, L.S. No. 10318
 Printed of Typed Name

Pages or sheets covered by this seal THIS PAGE My license renewal date is 12/31/13

List Corners to be Indexed

Corners	Section	Twp	Range
S 1/4 Cor	21	83	37
N 1/4 Cor	28	83	37
SE Cor	21	83	37
SW Cor	22	83	37
NW Cor	27	83	37
NE Cor	28	83	37