



INDEXED _____
FOLLOW UP _____
PROOFED _____
SCANNED _____

This document prepared by : Semke & Associates - 712-792-2276
Micheal G. Semke, L.S. #10318 - 716 N. Crawford St. - Carroll, Iowa

UNITED STATES PUBLIC LAND SURVEY CORNER CERTIFICATE
OF

Land Survey Monuments situated in Section 22, Township 83 North, Range 37
West, of the Fifth Principal Meridian, Crawford County, Iowa.
Previously recorded in Book _____, Page _____ in County Recorder's Office.

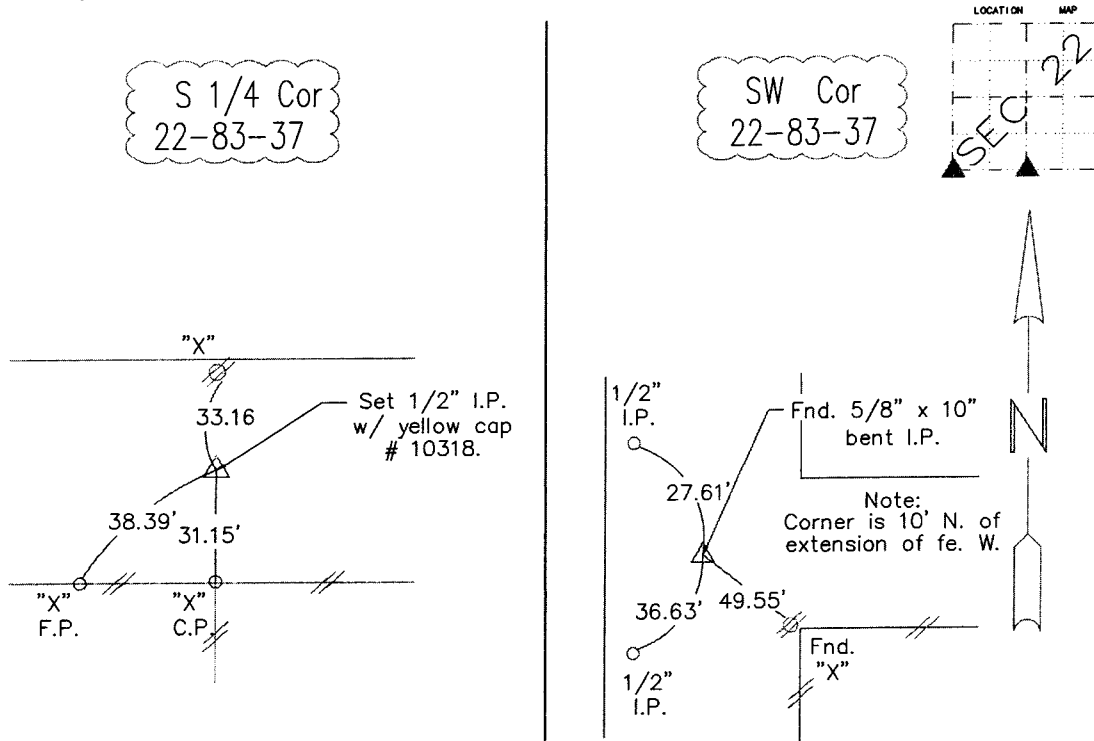
(Show reason for preparing this certificate, the evidence and detailed procedures used in establishing the corner positions and monumentation found or placed.)

S 1/4 Corner Dug and probed 6'x3'x4' @ Co. ties.
Found nothing. Set 1/2" iron pin @ ties to
SE and SW corners from Co. Engineer.
SW Corner Found 5/8" x 10" bent iron pin over Conc.
Monument. Reset 80 d. spike to 2" deep.

Note: All pins set are 1/2" x 24" Rerod w/Yellow Cap #10318 unless noted otherwise.

PLAN - VIEW

(Show a minimum of three reference ties to durable physical objects, relevant monuments and physical conditions that will enable recovery of the corner.)



Note: all ties slope chained unless noted otherwise.

PROFESSIONAL LAND SURVEYOR
MICHEAL G. SEMKE
10318
IOWA

I HEREBY CERTIFY THAT THIS LAND SURVEYING DOCUMENT AND RELATED SURVEY WORK WAS PERFORMED BY ME OR UNDER MY DIRECT PERSONAL SUPERVISION AND THAT I AM A DULY LICENSED LAND SURVEYOR UNDER THE LAWS OF THE STATE OF IOWA.

Micheal G. Semke 5/22/04
Signature Date
Micheal G. Semke, L.S. No. 10318
Printed of Typed Name

Pages of sheets covered by this seal THIS PAGE My license is subject to renewal 12/31/05.

List Corners to be Indexed

Corners	Section	Twp	Range
S 1/4 Cor	22	83	37
N 1/4 Cor	27	83	37
SW Cor	22	83	37
SE Cor	21	83	37
NE Cor	28	83	37
NW Cor	27	83	37