

WORKED _____
 FOLLOW UP _____
 RECORDED _____
 SCALED _____

REC018530
 Crawford County Recorder
 Denise Meeves
Fee Book 2008-1201
 04/24/2008 @09:36AM
 PLC PLAT CORNER CER # Pages: 1
 Book: _____
 Total Fees: \$7.00

PREPARED BY & RETURN TO MIKE SCHULTE, SNYDER & ASSOCIATES, INC. 2727 SW SNYDER ROAD, ANKENY, IOWA 50023 (888) 964-2020

UNITED STATES PUBLIC LAND SURVEY CORNER CERTIFICATE OF

Land Survey Monuments situated in Section 26, Township 83 N, Range 37 W, of the Fifth Principal Meridian, CRAWFORD County, Iowa. Previously recorded in N/A in County Recorder's Office.
 (book, page, document number, ect.)

(Show reason for preparing this certificate, the evidence and detailed procedures used in establishing the corner positions and monumentation found or placed.)

Monument Description and Remarks:

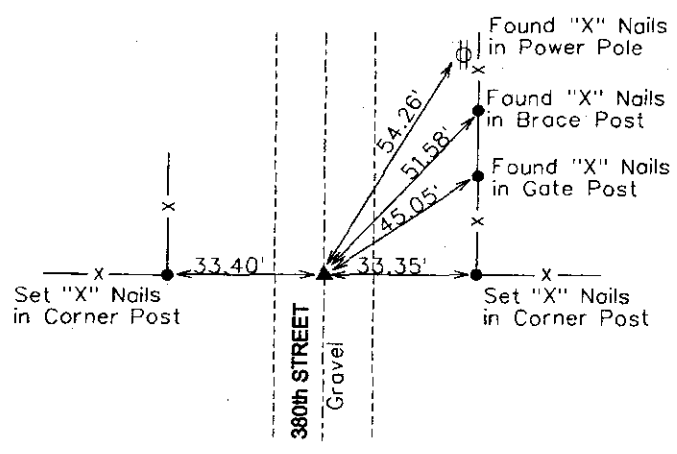
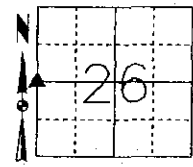
W1/4 CORNER SECTION 26-83-37
NO RECORDED CORNER CERTIFICATE RETIRED CORNER
FOUND 5/8" REBAR 8" DEEP IN THE CENTERLINE OF 380th STREET BY USING COUNTY ENGINEER'S TIES DATED 1995

Plan-View

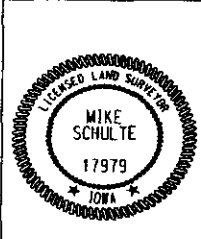
(Show a minimum of three reference ties to durable physical objects, relevant monuments and physical conditions that will enable recovery of the corner.)

NAD 83 (1996)
 41°58'22.26000" N
 95°07'51.74038" W
 1430.8' NAVD88

W1/4 CORNER
 FOUND 5/8" REBAR 8" DEEP



NOTE: ALL DISTANCES MEASURED HORIZONTAL



I hereby certify that this land surveying document was prepared and the related surveying work was performed by me or under my direct supervision and that I am a duly licensed Land Surveyor under the laws of the State of Iowa.
Mike Schulte 4/23/08
 Mike Schulte, PLS Date
 License Number 17979
 My License Renewal Date is December 31, 2009
 Pages or sheets covered by this seal:
 SHEET 1 OF 1

List Corners to be Indexed

Corners	Section	Twp	Range
W1/4 CORNER	26	83	37
E1/4 CORNER	27	83	37

TECH: SLG/MLS PN- 83-37-26 108.0317 DATE: 4/18/08