

INDEXED _____
 FOLLOW UP _____
 PROOFED _____
 SCANNED _____

REC018531
 Crawford County Recorder
 Denise Meeves
Fee Book 2008-1202
 04/24/2008 @09:37AM
 PLC PLAT CORNER CER
 Book: Page: # Pages: 1
 Total Fees: \$7.00

PREPARED BY & RETURN TO MIKE SCHULTE, SNYDER & ASSOCIATES, INC. 2727 SW SNYDER ROAD, ANKENY, IOWA 50023 (888) 964-2020

UNITED STATES PUBLIC LAND SURVEY CORNER CERTIFICATE OF

Land Survey Monuments situated in Section 26, Township 83 N, Range 37 W, of the Fifth Principal Meridian, CRAWFORD, County, Iowa.
 Previously recorded in N/A in County Recorder's Office.

(book, page, document number, ect.)

(Show reason for preparing this certificate, the evidence and detailed procedures used in establishing the corner positions and monumentation found or placed.)

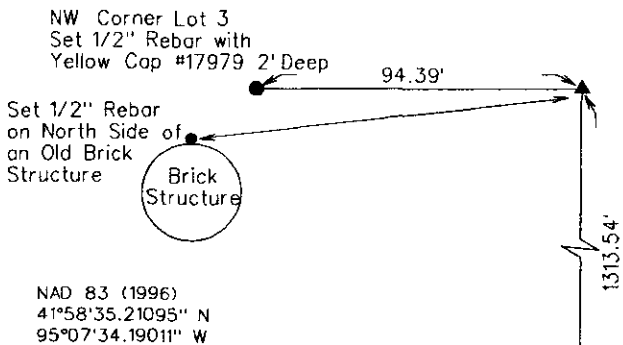
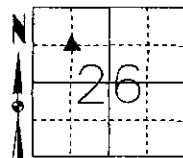
Monument Description and Remarks:

NE CORNER SW1/4 NW1/4 SECTION 26-83-37
NO RECORDED CORNER CERTIFICATE
SET 1/2" REBAR WITH YELLOW CAP #17979 2'DEEP BY SPLIT OF N1/4, W1/4 AND NW SECTION
CORNERS

Plan-View

(Show a minimum of three reference ties to durable physical objects, relevant monuments and physical conditions that will enable recovery of the corner.)

NE CORNER SW1/4 NW1/4
 SET 1/2" REBAR WITH
 YELLOW CAP #17979 2'DEEP



NW Corner Lot 3
 Set 1/2" Rebar with
 Yellow Cap #17979 2'Deep

Set 1/2" Rebar
 on North Side of
 an Old Brick
 Structure

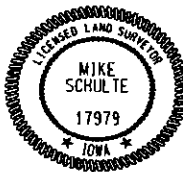
Brick
 Structure

NAD 83 (1996)
 41°58'35.21095" N
 95°07'34.19011" W

SE Corner SW1/4 NW1/4
 Section 26-83-37
 Set 1/2" Rebar with Yellow Cap #17979

Note:
 Corner is located in a farm field where no near-by features exist. If the ties shown don't exist or fail to offer the accuracy needed, please refer to the associated plat - Inst #2008-1127

NOTE: ALL DISTANCES MEASURED HORIZONTAL



I hereby certify that this land surveying document was prepared and the related surveying work was performed by me or under my direct supervision and that I am a duly licensed Land Surveyor under the laws of the State of Iowa.

Mike Schulte 4/23/08
 Mike Schulte, PLS Date

License Number: 17979
 My License Renewal Date is December 31, 2009
 Pages or sheets covered by this seal:
 SHEET 1 OF 1

List Corners to be Indexed

Corners	Section	Twp	Range
NE CORNER SW1/4 NW1/4	26	83	37

TECH: SLG/MLS

PN: 83-37-26 108.0317

DATE: 4/18/08