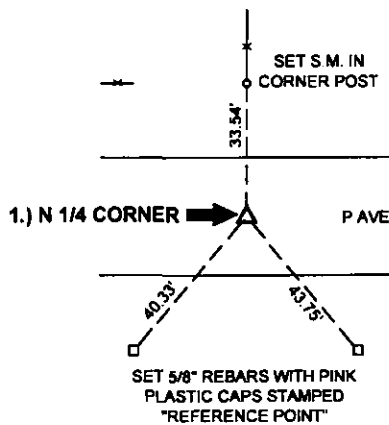
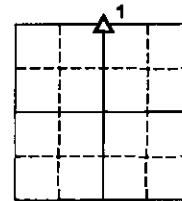


PREPARED BY AND RETURN TO: JEFFREY M. KRUEGER P.L.S., KUEHL AND PAYER LTD., 2002 WEST MAIN ST., SAC CITY, IA 50583 PH. (712)662-7859

**UNITED STATES PUBLIC LAND SURVEY CORNER CERTIFICATE
 OF**

SECTION 24

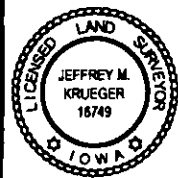
LAND SURVEY MONUMENTS SITUATED IN SECTION 24
 TOWNSHIP 83 NORTH, RANGE 37 WEST
 OF THE 5TH P.M., CRAWFORD COUNTY, IOWA.



**1.) N 1/4 CORNER
 24-83-37
 CRAWFORD COUNTY, IOWA:**

FOUND CONCRETE MONUMENT, 15" DEEP. SET 5/8" REBAR ON SOUTH SIDE, FLUSH WITH TOP OF MONUMENT TO AID IN LOCATION.

THIS CERTIFICATE IS BEING PREPARED BECAUSE: THERE IS NO CERTIFICATE FOR THE CORNER ON FILE WITH THE RECORDER OF THE COUNTY IN WHICH THE CORNER IS LOCATED.



I hereby certify that this land surveying document was prepared and the related survey work was performed by me or under my direct personal supervision and that I am a duly licensed Land Surveyor under the laws of the State of Iowa.

Jeffrey M. Krueger 9/2/2011
 Jeffrey M. Krueger Date:
 License Number 16749
 My license renewal date is December 31, 2012
 Pages covered by this seal 1

S.M. = SURVEY MARKER
 PLASTIC REFERENCE DISK
 AS SHOWN BELOW



PN: 110580 DRAWN: JMK

List Corners to be Indexed

Corners	Section	Township	Range
1) N 1/4	24	83	37