

2000 JA 24 PM 3:06

INST. NO. 200-0185
DENISE MEEVES, RECORDER
Denise Meeves
FFC *nodes*

FILED
2000
JAN 24
PM 3:06
CRAWFORD
COUNTY
IOWA

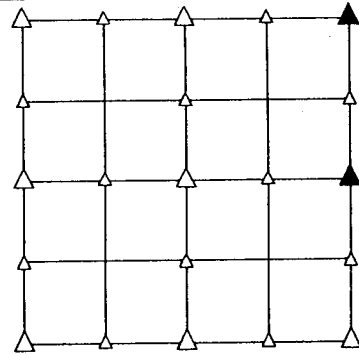
PREPARED BY - H. DALE WIGHT - CRAWFORD COUNTY ENGINEER - COURTHOUSE DENISON, IOWA 51442 (712) 263-2449

UNITED STATES PUBLIC LAND SURVEY CORNER CERTIFICATE OF

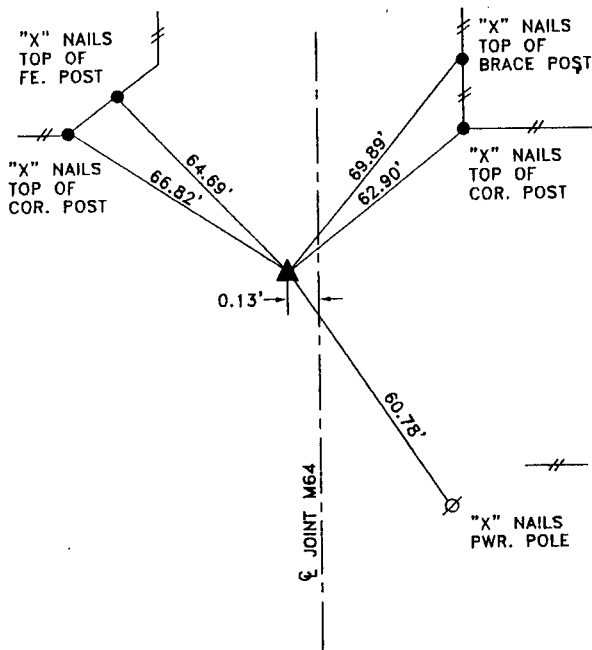
LAND SURVEY MONUMENT SITUATED IN SECTION 23, T 83 N, R 37 W OF
THE 5TH P.M., CRAWFORD COUNTY, IOWA.
PREVIOUSLY RECORDED IN BOOK _____, PAGE _____, OTHER _____

MONUMENT DESCRIPTION AND REMARKS

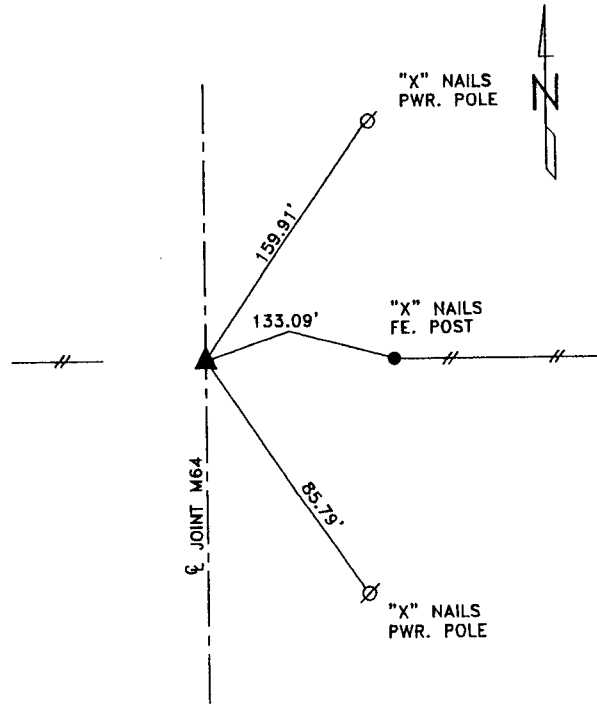
- NE CORNER - SET BOLT FLUSH WITH ASPHALT FROM CONSTRUCTION TIES
- E1/4 CORNER - SET BOLT FLUSH WITH ASPHALT FROM CONSTRUCTION TIES



PLAN VIEW SHOWING RELATIVE LOCATION OF MONUMENT AND REFERENCE POINTS.



DISTANCES PLUMB CHAINED
NE CORNER SECTION 23-83-37



DISTANCES PLUMB CHAINED
E1/4 CORNER SECTION 23-83-37

I hereby certify that this engineering document or land surveying document was prepared by me or under my direct personal supervision and that I am a duly licensed Professional Engineer and a duly licensed Land Surveyor, under the laws of the State of Iowa.

SIGNED H. Dale Wight DATE (Month, Day, Year) 1-24-2000
H. DALE WIGHT, P.E. & L.S. Iowa Reg. No. 5798
My license renewal date is December 31, 2000.

