

1999 AP -7 AM 10: 25

99-1037

INST. NO. DENISE MEEVES, RECORDER

Denise Meeves
FEE *Plus* *Manly Giten, Deputy*

This document prepared by: Semke & Associates - 712-792-2276
Michael G. Semke, L.S.#10318 - 608 N. Court St., Carroll, Iowa

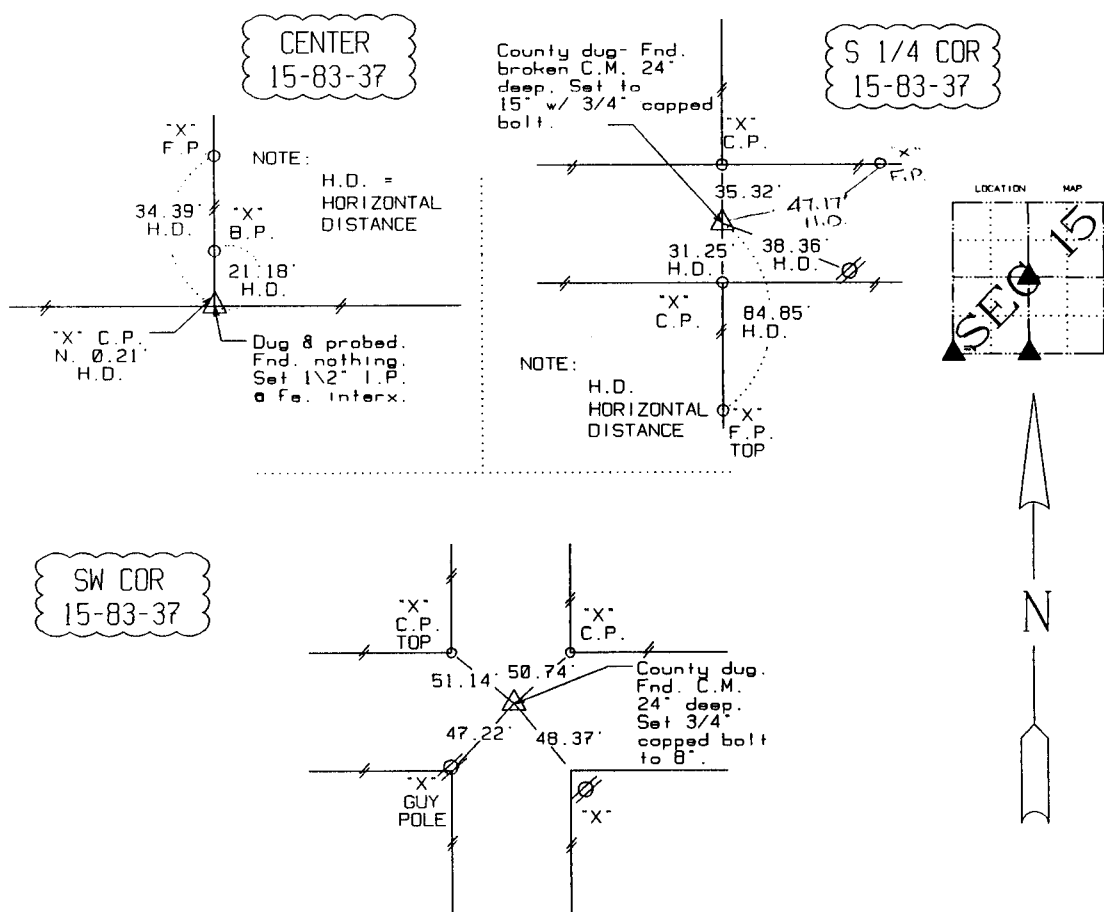
UNITED STATES PUBLIC LAND SURVEY CORNER CERTIFICATE
OF

Land Survey Monuments situated in Section 15, Township 83, Range 37, of the Fifth Principal Meridian, Crawford County, Iowa. Previously recorded in _____ in County Recorder's Office.
(book, page, document number, etc.)

(Show reason for preparing this certificate, the evidence and detailed procedures used in establishing the corner positions and monumentation found or placed.)

PLAN - VIEW

(Show a minimum of three reference ties to durable physical objects, relevant monuments and physical conditions that will enable recovery of the corner.)



Note: All ties slope chained unless noted.



I HEREBY CERTIFY THAT THIS CORNER CERTIFICATE WAS PREPARED BY ME OR UNDER MY DIRECT PERSONAL SUPERVISION AND THAT I AM A PROFESSIONAL LAND SURVEYOR UNDER THE LAWS OF THE STATE OF IOWA. MY REGISTRATION IS SUBJECT TO RENEWAL 12-31-99.

3/29/99
DATE

Michael G. Semke
MICHAEL G. SEMKE, RLS NO 10318

List Corners to be Indexed

Corners	Section	Twp	Range
S 1/4	15	83	37
N 1/4	22	83	37
SW COR	15	83	37
NW COR	22	83	37
SE COR	16	83	37
NE COR	21	83	37
CENTER	15	83	37