

PREPARED BY AND RETURN TO DAVE JOENS, SNYDER & ASSOCIATES, INC. 501 SW ORALABOR ROAD, ANKENY, IOWA 50021 (888) 964-2020

UNITED STATES PUBLIC LAND SURVEY CORNER CERTIFICATE OF

Land Survey Monuments situated in Section 22, Township 83, Range 37, of the Fifth Principal Meridian, CRAWFORD, County, Iowa. Previously recorded in N/A in County Recorder's Office.
 (book, page, document number, ect.)

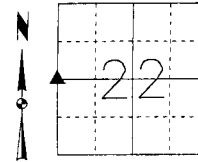
(Show reason for preparing this certificate, the evidence and detailed procedures used in establishing the corner positions and monumentation found or placed.)

Monument Description and Remarks:

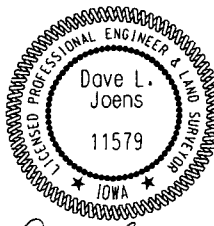
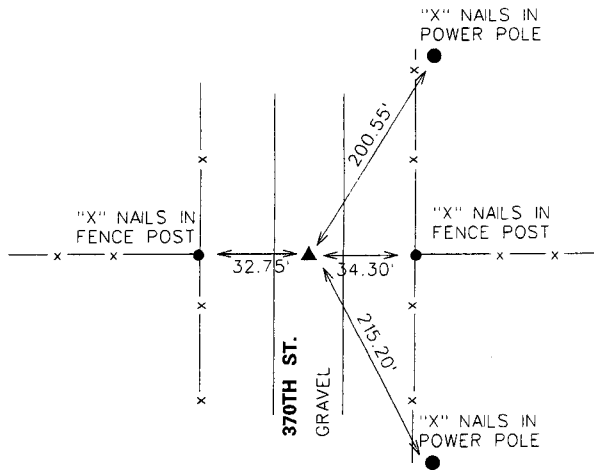
W 1/4 CORNER - FOUND CONCRETE MONUMENT 6" DEEP USING ENGINEERS TIES AND METAL LOCATOR

Plan-View

(Show a minimum of three reference ties to durable physical objects, relevant monuments and physical conditions that will enable recovery of the corner.)



W 1/4 CORNER
 FOUND CONCRETE MONUMENT



I hereby certify that this Engineering or Land Surveying Document was prepared by me or under my direct supervision and that I am a duly Licensed Professional Engineer and Land Surveyor under the Laws of the State of Iowa.

My license renewal date is December 31, 2004
 Pages or sheets covered by this seal:
 SHEET 1 OF 1

Dave L. Joens

Dave L. Joens, P.E. & PLS
 Iowa License No. 11579

9/13/2004 Date

List Corners to be Indexed			
Corners	Section	Twp	Range
W 1/4 CORNER	22	83	37

TECH: JCD PN:104762 DATE: 09/10/04