

Crawford County Recorder
Denise Meeves
Fee Book 2013-1862

08/01/2013 812:13PM
PLC PLAT CORNER CER # Pages: 1
Book: Page: # Pages: 1
Total Fees: \$7.00

INDEXED BAM
FOLLOW UP _____
PROOFED _____
SCANNED _____

PREPARED BY & RETURN TO MIKE SCHULTE, SNYDER & ASSOCIATES, INC. 1751 MADISON AVENUE, COUNCIL BLUFFS, IOWA 51503 7121-322-3202

UNITED STATES PUBLIC LAND SURVEY CORNER CERTIFICATE OF

Land Survey Monuments situated in Section 21, Township 83, Range 37, of the Fifth Principal Meridian, CRAWFORD, County, Iowa.
Previously recorded in N/A SEE BELOW in County Recorder's Office.
(book, page, document number, ect.)

(Show reason for preparing this certificate, the evidence and detailed procedures used in establishing the corner positions and monumentation found or placed.)

Monument Description and Remarks:

W 1/4 CORNER - FOUND CONCRETE MONUMENT 1.5' DEEP WITH RED BRICK OVER USING CALCULATED POINT FROM COUNTY TIES AND COUNTY GRADE ALL. SET 1/2" REBAR WITH YELLOW PLASTIC CAP ON NORTH SIDE FOR LOCATING PURPOSES. REPLACED BRICK PIECES AND BACKFILLED. SET 1/2" X1' REBAR OVER IT 6" DEEP.

THE N1/2 OF 360TH MAYBE REGRADED AND COULD AFFECT THIS CORNER.

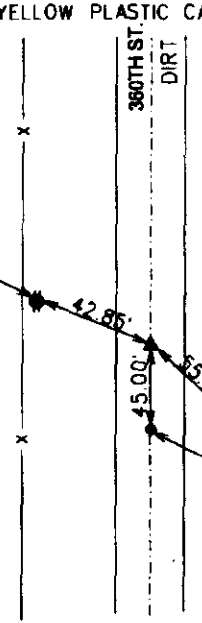
Plan-View

(Show a minimum of three reference ties to durable physical objects, relevant monuments and physical conditions that will enable recovery of the corner.)

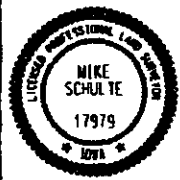
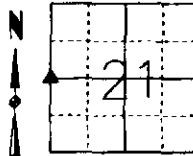
SPC IA NORTH
US SURVEY FEET
IA RTN DERRIVED
NAD 83(CORS96)
EPOCH 2002.00
N: 3462984.47
E: 4467387.83
ELEV.: 1432.3
C.M. ELEV.: 1431.4

W 1/4 CORNER
FOUND CONCRETE MONUMENT 1.5' DEEP
SET 1/2" X1' REBAR 6" DEEP
WITH YELLOW PLASTIC CAP #17979

SET SURVEY MARKER IN POWER POLE



1/2" REBAR
YELLOW PLASTIC
CAP #17979 FROM
PLAT OF SURVEY



I hereby certify that this land surveying document was prepared and the related survey work was performed by me or under my direct personal supervision and that I am a duly licensed Professional Land Surveyor under the laws of the State of Iowa.
Mike Schulte 2013-07-30
Mike Schulte, PLS Date
License Number 17979
By License Renewal Date is December 31, 2013
Pages or sheets covered by this seal:
SHEET 1 OF 1

| List Corners to be Indexed | | | |
|----------------------------|---------|-----|-------|
| Corners | Section | Twp | Range |
| E 1/4 COR | 20 | 83 | 37 |
| W 1/4 COR | 21 | 83 | 37 |