

Crawford County Recorder
Denise Meeves
Fee Book 2013-0776

04/03/2013 @01:54PM
PLC: PLAT CORNER CER
Book: Page: # Pages: 1
Total Fees: \$7.00

INDEXED *SM g*
FOLLOW UP _____
PROOFED _____
SCANNED _____

PREPARED BY & RETURN TO MIKE SCHULTE, SNYDER & ASSOCIATES, INC. 2727 SW SNYDER ROAD, ANKENY, IOWA 50023 (515) 964-2020

UNITED STATES PUBLIC LAND SURVEY CORNER CERTIFICATE OF

Land Survey Monuments situated in Section 1, Township 83, Range 37, of the Fifth Principal Meridian, CRAWFORD, County, Iowa. Previously recorded in FEE BOOK 2006-2396 in County Recorder's Office. (book, page, document number, ect.)

(Show reason for preparing this certificate, the evidence and detailed procedures used in establishing the corner positions and monumentation found or placed.)

Monument Description and Remarks:

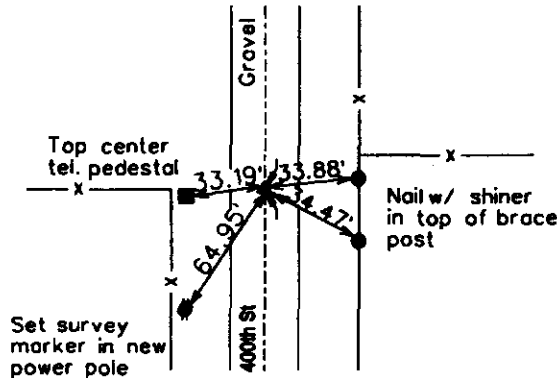
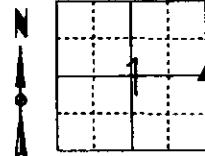
FOUND 1/2" REBAR WITH CAP #11804 3" DEEP USING EXISTING TIES. POLES HAVE BEEN REPLACED SINCE ICE STORM SO ADDITIONAL TIES ARE NEEDED.

Plan-View

(Show a minimum of three reference ties to durable physical objects, relevant monuments and physical conditions that will enable recovery of the corner.)

SPC IA NORTH
US SURVEY FT
IA RTN DERIVED
NAD83 (2011) (EPOCH 2010.00)
N 3478074.88
E 4488753.89

E1/4 CORNER
FND 1/2" REBAR W/ CAP #11804
3" DEEP.



I hereby certify that this land surveying document was prepared and the related surveying work was performed by me or under my direct supervision and that I am a duly Licensed Land Surveyor under the laws of the State of Iowa.

Mike Schulte
Mike Schulte - PLS Date *2/20/13*

License Number 17979
My License Renewal Date is December 31, 2013
Pages or sheets covered by this seal:
SHEET 1 OF 1

List Corners to be Indexed			
Corners	Section	Twp	Range
E 1/4 COR	1	83	37

TECH: MNP

PN: 83-37-01 (113.0266)

DATE: 04/01/13