

INDEXED DM/19
 FOLLOW UP WKS
 PROOFED DNA
 SCANNED g

REC011627



Crawford County Recorder Denise Meeves
 FEE BOOK 2006-2395 8/18/2006 @ 10:29AM
 PLC PLAT CORNER CERBook: Page: #: 1
 Total Fees: \$7.00

PREPARED BY & RETURN TO MICHAEL G. GEIER, SNYDER & ASSOCIATES, INC. 2727 SW SNYDER ROAD, ANKENY, IOWA 50023 (888)964-2020

UNITED STATES PUBLIC LAND SURVEY CORNER CERTIFICATE OF

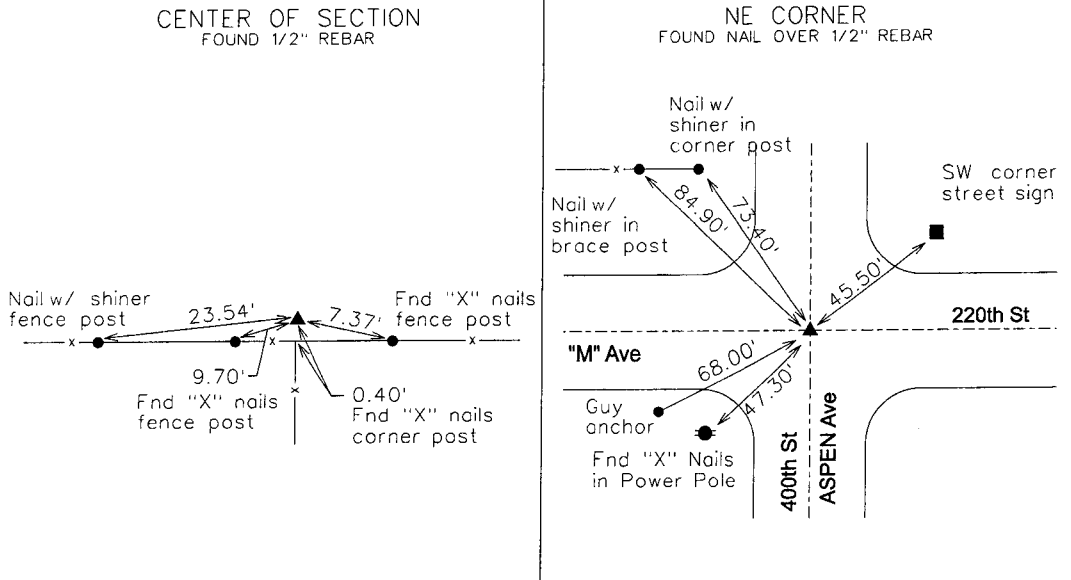
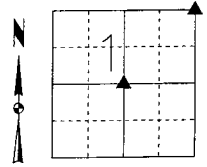
Land Survey Monuments situated in Section 1, Township 83, Range 37, of the Fifth Principal Meridian, CRAWFORD County, Iowa. Previously recorded in N/A in County Recorder's Office. (book, page, document number, ect.)

(Show reason for preparing this certificate, the evidence and detailed procedures used in establishing the corner positions and monumentation found or placed.)

Monument Description and Remarks:
CENTER - FOUND 1/2" REBAR AT FENCE INTERSECTION AND RETIED SECTION CORNER.
NORTHEAST CORNER - FOUND NAIL OVER 1/2" REBAR 1.0' DEEP USING EXISTING TIES.
SET 1/2" REBAR WITH CAP *11804 OVER EXISTING 1/2" REBAR AND RETIED SECTION CORNER.

Plan-View

(Show a minimum of three reference ties to durable physical objects, relevant monuments and physical conditions that will enable recovery of the corner.)



I hereby certify that this land surveying document was prepared and the related surveying work was performed by me or under my direct supervision and that I am a duly licensed Land Surveyor under the laws of the State of Iowa.

Michael Geier 8-10-06
 Michael G. Geier, PLS Date
 License Number 11804
 My License Renewal Date is December 31, 2007

Pages or sheets covered by this seal:
 SHEET 1 OF 1



List Corners to be Indexed

Corners	Section	Twp	Range
CENTER	1	83	37
NE COR	1	83	37
SE COR	36	84	37
SW COR	31	84	36
NW COR	6	83	36

TECH: JDP PN: 83-37-01 (105.1255) DATE: 04/07/06