

02 DEC -6 PM 1:25

INST. NO. 2002-3977

DENISE MEEVES, RECORDER

*Denise Meeves*  
FFF *nee Mary Giten Deputy*

PREPARED BY: J. SCOTT SHEVEL L.S., KUEHL AND PAYER LTD., 423 WEST MAIN ST., SAC CITY, IA 50583 PH. (712)662-7859

**UNITED STATES PUBLIC LAND SURVEY CORNER CERTIFICATE  
OF**

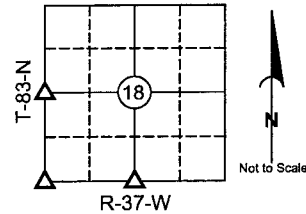
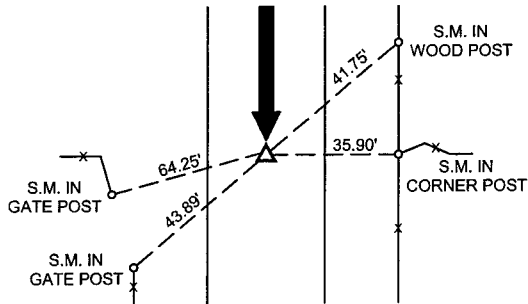
LAND SURVEY MONUMENTS SITUATED IN SECTION 18, TOWNSHIP 83 NORTH,  
RANGE 37 WEST, OF THE 5TH PRINCIPAL MERIDIAN, CRAWFORD COUNTY, IOWA.  
PREVIOUSLY RECORDED IN BOOK \_\_\_\_\_ PAGE \_\_\_\_\_

**MONUMENT DESCRIPTION AND REMARKS:**

- 1.) W 1/4 CORNER 18-83-37: ACCORDING TO COUNTY RECORDS, NO MONUMENT WAS FOUND IN PREVIOUS SEARCH; SET 5/8" REBAR WITH RED PLASTIC CAP STAMPED "S. SHEVEL 11810", 6" DEEP, EQUIDISTANT ON A LINE BETWEEN THE SW & NW CORNERS
- 2.) SW CORNER 18-83-37: FOUND 1" BAR 18" DEEP
- 3.) S 1/4 CORNER 18-83-37: FOUND BROKEN OFF CONCRETE MONUMENT 8" DEEP; SET 1/2" REBAR ON SOUTH SIDE TO AID IN LOCATION

**1.) W 1/4 CORNER 18-83-37 PLAN - VIEW**

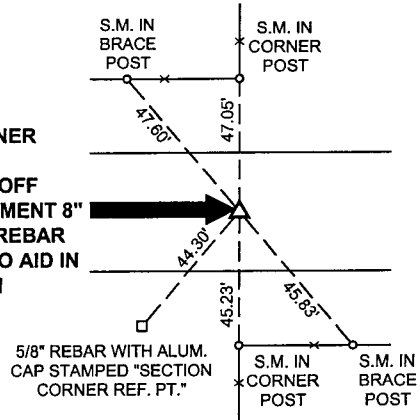
**SET 5/8" REBAR WITH RED PLASTIC CAP STAMPED "S. SHEVEL 11810", 6" DEEP**



CRAWFORD COUNTY

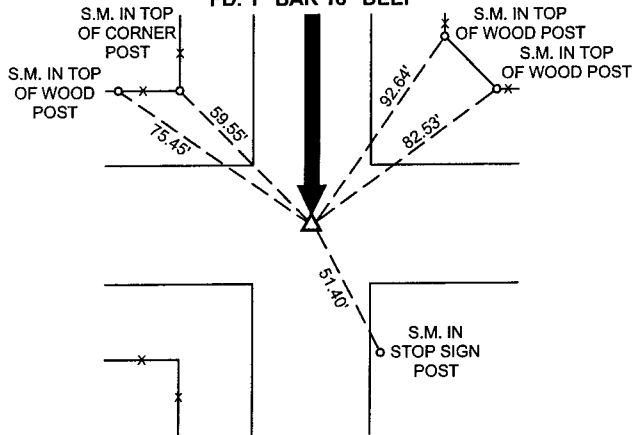
**3.) S 1/4 CORNER 18-83-37**

**FD. BROKEN OFF CONCRETE MONUMENT 8" DEEP; SET 1/2" REBAR ON SOUTH SIDE TO AID IN LOCATION**

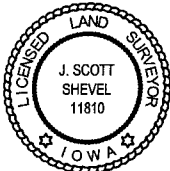


**2.) SW CORNER 18-83-37**

**FD. 1" BAR 18" DEEP**



S.M. = SURVEY MARKER  
PLASTIC REFERENCE DISK  
AS SHOWN BELOW



I hereby certify that this land surveying document was prepared and the related survey work was performed by me or under my direct personal supervision and that I am a duly licensed Land Surveyor under the laws of the State of Iowa.

*J. Scott Shevel* 12/2/02 Date:

J. Scott Shevel  
License Number 11810  
My license renewal date is December 31, 2003  
Pages covered by this seal 1

**List Corners to be Indexed**

Corners	Section	Township	Range
1) W 1/4	18	83	37
2) SW	18	83	37
3) S 1/4	18	83	37

PN: 020628  
DRAWN: JMK