

FILED IN BOOK 107
 CRAWFORD COUNTY
 2002 AU -6 AM ID: 37
 INST. NO. 2002-2612
 DENISE MEEVES, RECORDER
Denise Meeves
 FEE 6.00

INDEXED
 FOLLOW UP
 PROVIDED
 DM

WARDER C. HILLHOUSE, JR. MHF ENGINEERING P.C. 300 W. MCKINLEY JEFFERSON, IA. (515)386-4101

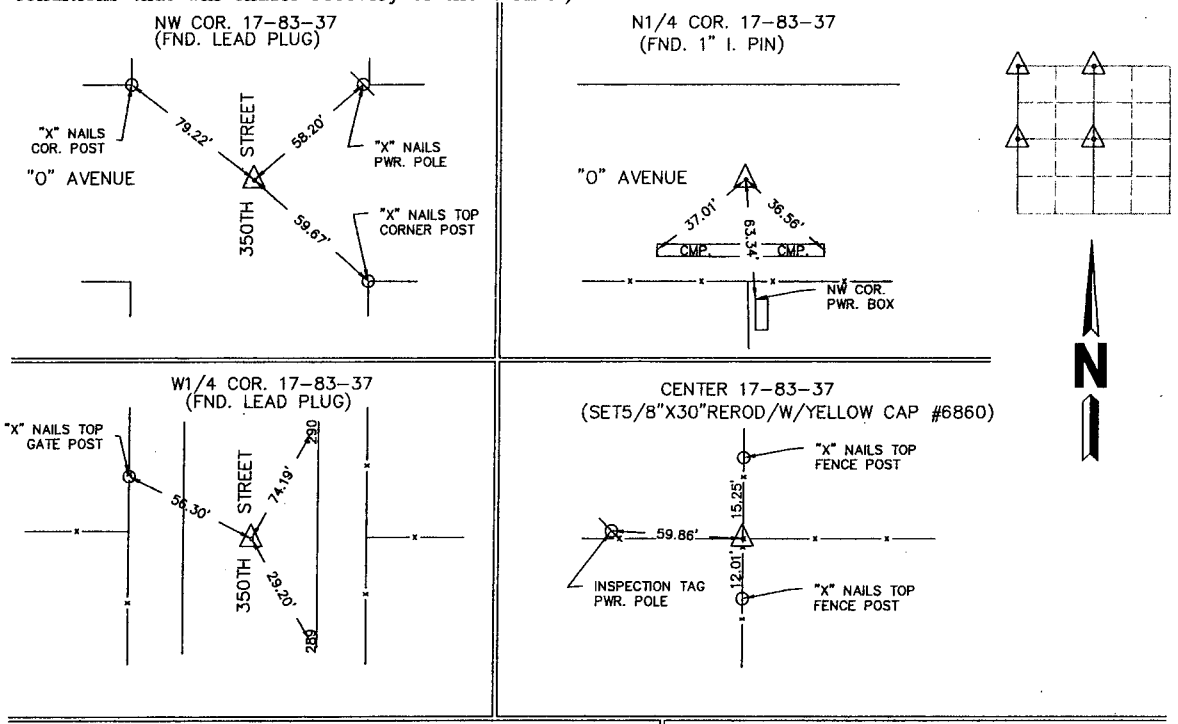
UNITED STATES PUBLIC LAND SURVEY CORNER CERTIFICATE OF
 Land Survey Monuments in Section 17, Township 83, Range 37,
 of the Fifth Principal Meridian, CRAWFORD County, Iowa.
 Previously recorded in _____ in County Recorder's Office.
 (book, page, document number, etc.)

(Show reason for preparing this certificate, the evidence and detailed procedures used in establishing the corner positions and monumentation found or placed.)

Monument Description and Remarks: CORNERS LOCATED FOR SURVEY WORK IN SECTION.

PLAN - VIEW

(Show a minimum of three reference ties to durable physical objects, relevant monuments and physical conditions that will enable recovery of the corner.)



I hereby certify that land surveying document and the related survey work was performed by me or under my direct personal supervision and that I am a duly licensed land surveyor under the laws of the state of Iowa.

Signature: *Warder C. Hillhouse Jr.*
 Name typed or printed: Warder C. Hillhouse, Jr.
 Date: 8/5/02 Lic. No. 6806
 License Renewal Dec. 31, 2003
 Date Surveyed: 06/27/02

Seal

List Corners to be Indexed

Corners	Section	Twp	Range
NW COR.	17	83	37
N1/4 COR.	17	83	37
W1/4 COR.	17	83	37
CENTER	17	83	37

File No. 02101-1
 M.H.F. ENGINEERING, P.C.
 ENGINEERS - LAND SURVEYORS
 Jefferson, Iowa 50129 Ph. (515)386-4101