

FILED DENISON, IOWA
CRAWFORD COUNTY

INDEXED *DM*
FOLLOW UP *DM*
PROOFED *DM*

02 DEC -6 PM 1: 27

INST. NO. 2002-3979

DENISE MEEVES, RECORDER

Denise Meeves

SEE # *622*

Many Cities, Republic

PREPARED BY: J. SCOTT SHEVEL L.S., KUEHL AND PAYER LTD., 423 WEST MAIN ST., SAC CITY, IA 50583 PH. (712)662-7859

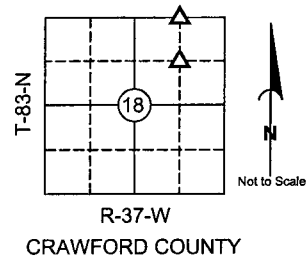
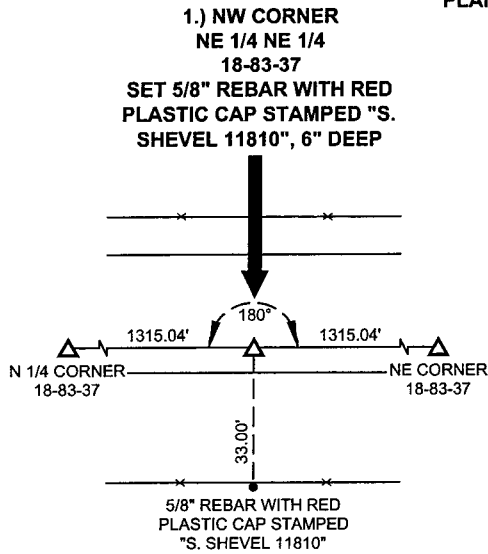
UNITED STATES PUBLIC LAND SURVEY CORNER CERTIFICATE OF

LAND SURVEY MONUMENTS SITUATED IN SECTION 18, TOWNSHIP 83 NORTH,
RANGE 37 WEST, OF THE 5TH PRINCIPAL MERIDIAN, CRAWFORD COUNTY, IOWA.
PREVIOUSLY RECORDED IN BOOK _____ PAGE _____

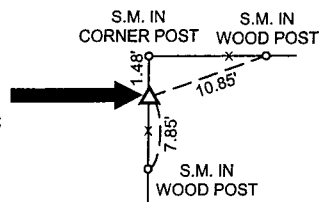
MONUMENT DESCRIPTION AND REMARKS:

- 1.) NW CORNER NE 1/4 NE 1/4 18-83-37: SET 5/8" REBAR WITH RED PLASTIC CAP STAMPED "S. SHEVEL 11810", 6" DEEP, EQUIDISTANT ON A LINE BETWEEN THE N 1/4 CORNER AND NE CORNER
- 2.) SW CORNER NE 1/4 NE 1/4 18-83-37: SET 5/8" REBAR WITH RED PLASTIC CAP STAMPED "S. SHEVEL 11810" AT THEORETICAL CENTER OF NE 1/4 PER B.L.M. METHODS

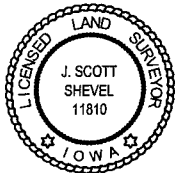
PLAN - VIEW



**2.) SW CORNER
NE 1/4 NE 1/4
18-83-37
SET 5/8" REBAR
WITH RED PLASTIC
CAP STAMPED "S.
SHEVEL 11810"**



S.M. = SURVEY MARKER
PLASTIC REFERENCE DISK
AS SHOWN BELOW



I hereby certify that this land surveying document was prepared and the related survey work was performed by me or under my direct personal supervision and that I am a duly licensed Land Surveyor under the laws of the State of Iowa.

J. Scott Shevel 12/2/02

J. Scott Shevel Date:

License Number 11810

My license renewal date is December 31, 2003

Pages covered by this seal 1

List Corners to be Indexed

Corners	Section	Township	Range
1) NW NE 1/4 NE 1/4	18	83	37
2) SW NE 1/4 NE 1/4	18	83	37

PN: 020628
DRAWN: JMK