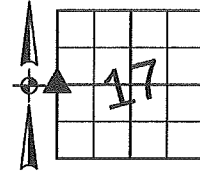


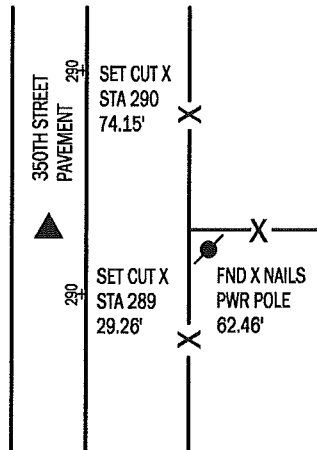
Denise Meeves RECORDER  
 Crawford County, Iowa  
 Instr. Number: 2018-1212  
 Recorded: 6/18/2018 at 12:03:23.0 PM  
 Pages 1  
 Fee Amount: \$7.00  
 Revenue Tax:

PREPARED BY AND RETURN TO: MIKE SCHULTE, SCHULTE SURVEYING, INC., 2003 390TH STREET, WESTSIDE, IA 51467 (712) 790-3489

**UNITED STATES PUBLIC LAND SURVEY CORNER CERTIFICATE OF**  
 LAND SURVEY MONUMENTS SITUATED IN SECTION 17 TOWNSHIP 83 NORTH, RANGE 37 WEST, OF THE FIFTH  
 PRINCIPAL MERIDIAN, CRAWFORD COUNTY, IOWA. PREVIOUSLY RECORDED IN 2002-2612 IN COUNTY  
(book, page instrument number)  
 RECORDER'S OFFICE.



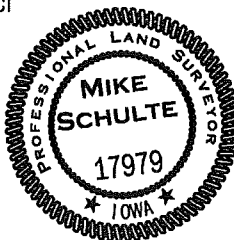
**W1/4 CORNER**  
 FND LEAD PLUG  
 N: 7238847.23 E: 16648071.30



USED RECORDED TIES TO FIND LEAD PLUG AND VERIFY POSITION. ADDED  
 CUT XS TO THE STATION MARKERS FOR A MORE EXACT LOCATION, AND  
 RETIED CORNER BECAUSE TIES TO THE WEST ARE NOW GONE.

I HEREBY CERTIFY THAT THIS LAND SURVEYING  
 DOCUMENT WAS PREPARED BY ME OR UNDER MY DIRECT  
 PERSONAL SUPERVISION AND THAT I AM A DULY  
 LICENSED PROFESSIONAL LAND SURVEYOR UNDER THE  
 LAWS OF THE STATE OF IOWA.

*Mike Schulte*  
 MIKE SCHULTE  
 LICENSE NUMBER: 17979  
 LICENSE RENEWAL DATE IS DECEMBER 31, 2019  
 PAGES COVERED BY THIS SEAL: 1 OF 1



\*All distances are measured horizontally unless noted.

**LIST CORNERS TO BE INDEXED**

CORNER	SECTION	TWP	RANGE
WEST 1/4	17	83	37
EAST 1/4	18	83	37

**BASIS OF BEARING**

1aRCS ZONE 6 - US SURVEY FEET  
 1aRTN DERIVED - NAD83(2011)(EPOCH 2010.00)

**SCHULTE SURVEYING, INC.**

DRAWN BY: MLS  
 PROJ NUMBER: 18-021