

FILED DENISON, IOWA  
CRAWFORD COUNTY

INDEXED *DM*  
FOLLOW UP *DM*  
PROJCTED *DM*

02 DEC -6 PM 1: 26

INST. NO. 2002-3978

DENISE MEEVES, RECORDER

*Denise Meeves*  
FEE # 600 *Mary Siten, Deputy*

PREPARED BY: J. SCOTT SHEVEL L.S., KUEHL AND PAYER LTD., 423 WEST MAIN ST., SAC CITY, IA 50583 PH. (712)662-7859

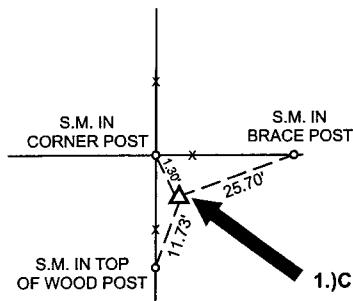
### UNITED STATES PUBLIC LAND SURVEY CORNER CERTIFICATE OF

LAND SURVEY MONUMENTS SITUATED IN SECTION 18, TOWNSHIP 83 NORTH,  
RANGE 37 WEST, OF THE 5TH PRINCIPAL MERIDIAN, CRAWFORD COUNTY, IOWA.  
PREVIOUSLY RECORDED IN BOOK \_\_\_\_\_ PAGE \_\_\_\_\_

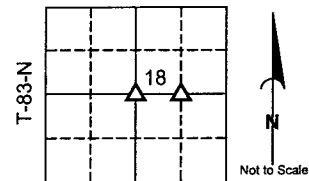
#### MONUMENT DESCRIPTION AND REMARKS:

- 1.) CENTER OF SECTION 18-83-37: SET 5/8" REBAR WITH RED PLASTIC CAP STAMPED "S. SHEVEL 11810" AT THEORETICAL POSITION PER B.L.M. METHODS
- 2.) SW CORNER SE 1/4 NE 1/4 18-83-37: SET 5/8" REBAR WITH RED PLASTIC CAP STAMPED "S. SHEVEL 11810" EQUIDISTANT ON A LINE BETWEEN THE CENTER OF SECTION AND E 1/4 CORNER

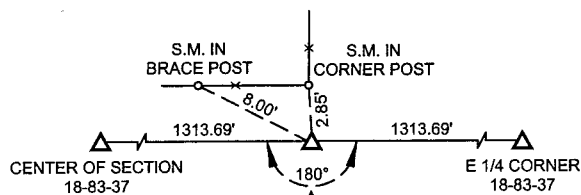
#### PLAN - VIEW



- 1.) CENTER OF SECTION  
18-83-37  
SET 5/8" REBAR WITH  
RED PLASTIC CAP  
STAMPED "S. SHEVEL  
11810"

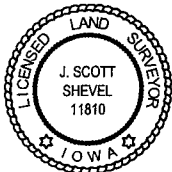


R-37-W  
CRAWFORD COUNTY



- 2.) SW CORNER  
SE 1/4 NE 1/4  
18-83-37  
SET 5/8" REBAR WITH RED  
PLASTIC CAP STAMPED "S.  
SHEVEL 11810"

S.M. = SURVEY MARKER  
PLASTIC REFERENCE DISK  
AS SHOWN BELOW



I hereby certify that this land surveying document was prepared and the related survey work was performed by me or under my direct personal supervision and that I am a duly licensed Land Surveyor under the laws of the State of Iowa.

*J. Scott Shevel* 12/2/02  
Date:

J. Scott Shevel  
License Number 11810  
My license renewal date is December 31, 2003  
Pages covered by this seal 1

#### List Corners to be Indexed

Corners	Section	Township	Range
1) CENTER	18	83	37
2) SW SE 1/4 NE 1/4	18	83	37

PN: 020628  
DRAWN: JMK