

INDEXED
 FOLLOW UP
 PROOFED
 SCANNED

REC011631



Crawford County Recorder Denise Meeves
 FEE BOOK 2006-2399 8/18/2006 @ 10:33AM
 PLC PLAT CORNER CERBook: Page: #: 1
 Total Fees: \$7.00

PREPARED BY & RETURN TO MICHAEL G. GEIER, SNYDER & ASSOCIATES, INC. 2727 SW SNYDER ROAD, ANKENY, IOWA 50023 (888) 964-2020

UNITED STATES PUBLIC LAND SURVEY CORNER CERTIFICATE OF

Land Survey Monuments situated in Section 8, Township 83, Range 37, of the Fifth Principal Meridian, CRAWFORD County, Iowa. Previously recorded in N/A in County Recorder's Office. (book, page, document number, ect.)

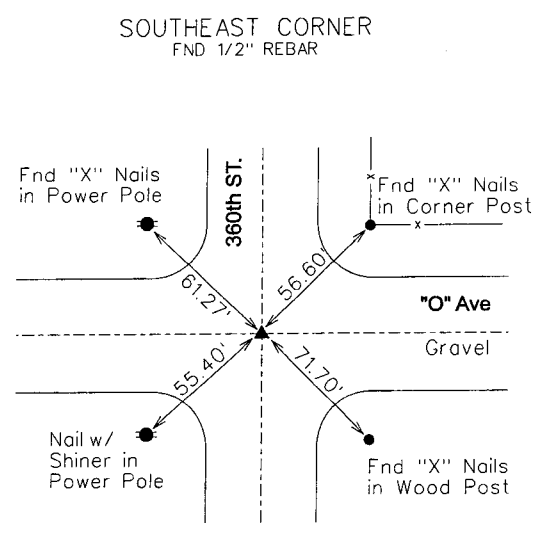
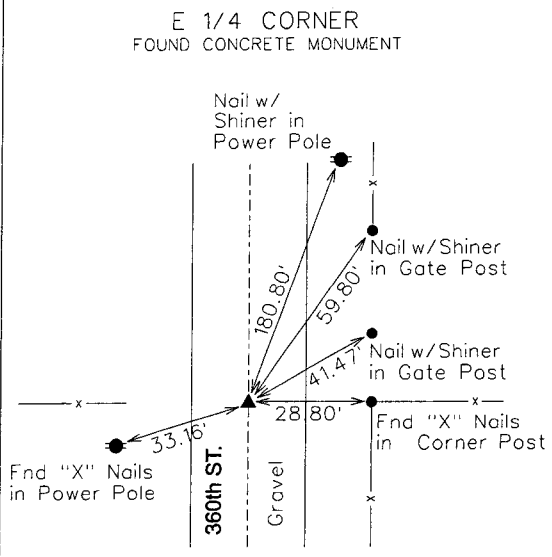
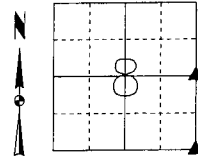
(Show reason for preparing this certificate, the evidence and detailed procedures used in establishing the corner positions and monumentation found or placed.)

Monument Description and Remarks:

EAST 1/4 CORNER - FOUND CONCRETE MONUMENT IN & 360th STREET 36" DEEP. FOUND USING EXISTING TIES AND RETIED SECTION CORNER.
SOUTHEAST CORNER - FOUND 1/2" REBAR IN & 360th STREET AND "O" AVE. 10" DEEP. FOUND USING EXISTING TIES AND RETIED SECTION CORNER.

Plan-View

(Show a minimum of three reference ties to durable physical objects, relevant monuments and physical conditions that will enable recovery of the corner.)



I hereby certify that this land surveying document was prepared and the related surveying work was performed by me or under my direct supervision and that I am a duly licensed Land Surveyor under the laws of the State of Iowa.
Michael G. Geier 8-10-06
 Michael G. Geier, PLS Date
 License Number 11804
 My License Renewal Date is December 31, 2007
 Pages or sheets covered by this seal:
 SHEET 1 OF 1

List Corners to be Indexed

Corners	Section	Twp	Range
E 1/4 COR	8	83	37
W 1/4 COR	9	83	37
SE COR	8	83	37
NE COR	17	83	37
NW COR	16	83	37
SW COR	9	83	37