

INDEXED DM  
 FOLLOW UP W  
 PROOFED W  
 SCANNED g

REC 011633



Crawford County Recorder Denise Meeves  
 FEE BOOK 2006-2401 8/18/2006 @ 10:38AM  
 PLC PLAT CORNER CERBook: Page: #: 1  
 Total Fees: \$7.00

PREPARED BY & RETURN TO MICHAEL G. GEIER, SNYDER & ASSOCIATES, INC. 2727 SW SNYDER ROAD, ANKENY, IOWA 50023 (888) 964-2020

### UNITED STATES PUBLIC LAND SURVEY CORNER CERTIFICATE OF

Land Survey Monuments situated in Section 9, Township 83, Range 37, of the Fifth Principal Meridian, CRAWFORD County, Iowa.  
 Previously recorded in N/A in County Recorder's Office.  
 (book, page, document number, ect.)

(Show reason for preparing this certificate, the evidence and detailed procedures used in establishing the corner positions and monumentation found or placed.)

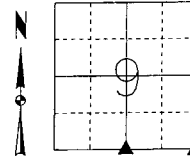
**Monument Description and Remarks:**

SOUTHEAST CORNER - FOUND CONCRETE MONUMENT IN ☐ "O" AVENUE AND ☐ 370th STREET 12" DEEP AND RETIED SECTION CORNER.

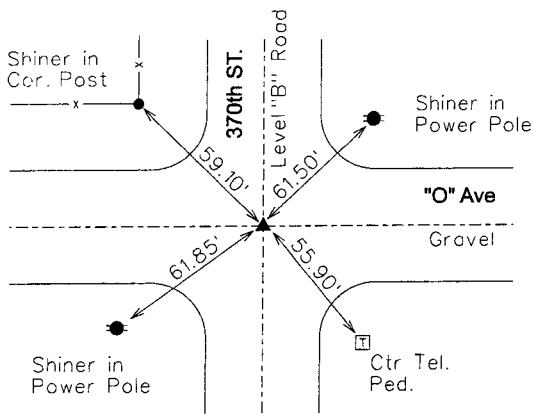
SOUTH 1/4 CORNER - FOUND 3/4" IRON PIN IN ☐ "O" AVENUE 3" DEEP USING EXISTING TIES AND RETIED SECTION CORNER.

**Plan-View**

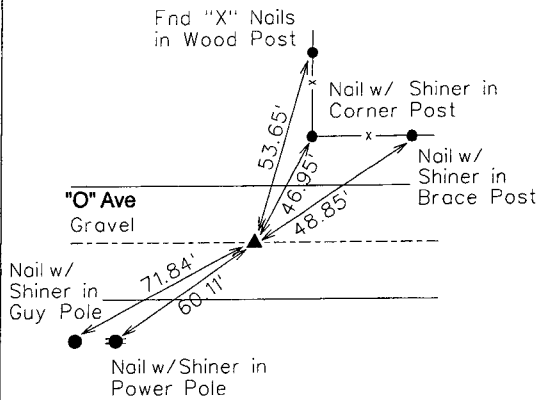
(Show a minimum of three reference ties to durable physical objects, relevant monuments and physical conditions that will enable recovery of the corner.)



**SOUTHEAST CORNER**  
 FOUND CONCRETE MONUMENT



**S 1/4 CORNER**  
 FOUND 3/4" IRON PIN



I hereby certify that this land surveying document was prepared and the related surveying work was performed by me or under my direct supervision and that I am a duly licensed Land Surveyor under the laws of the State of Iowa.  
*Michael G. Geier 8-10-06*  
 Michael G. Geier, PLS Date  
 License Number 11804  
 My License Renewal Date is December 31, 2007  
 Pages or sheets covered by this seal:  
 SHEET 1 OF 1

List Corners to be Indexed

Corners	Section	Twp	Range
SE COR	9	83	37
NE COR	16	83	37
NW COR	15	83	37
SW COR	10	83	37
S 1/4 COR	9	83	37
N 1/4 COR	16	83	37

TECH: JDP

PN: 83-37-09 (105.1255)

DATE: 04/13/06