

INDEXED  
 FOLLOW UP 27  
 PROC-ED  
 SCANNED

Crawford County Recorder  
 Denise Meeves  
**Fee Book 2013-0589**

03/15/2013 @10:07AM  
 PLC PLAT CORNER CER  
 Book: Page: # Pages: 1  
 Total Fees: \$7.00

PREPARED BY & RETURN TO MIKE SCHULTE, SNYDER & ASSOCIATES, INC. 1751 MADISON AVE, COUNCIL BLUFFS, IOWA 51503 (712) 322-3202

**UNITED STATES PUBLIC LAND SURVEY CORNER CERTIFICATE OF**

Land Survey Monuments situated in Section 15, Township 83, Range 37, of the Fifth Principal Meridian, CRAWFORD County, Iowa. Previously recorded in 99-1037 in County Recorder's Office.  
 (book, page, document number, ect.)

(Show reason for preparing this certificate, the evidence and detailed procedures used in establishing the corner positions and monumentation found or placed.)

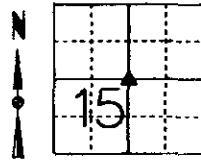
**Monument Description and Remarks:**

FOUND 1/2" REBAR SOUTH OF CORNER POST USING TIES IN INST NO. 99-1037. PLACED YPC 17979 OVER REBAR TO BETTER IDENTIFY THE MONUMENT. TIE DISTANCES UPDATED.

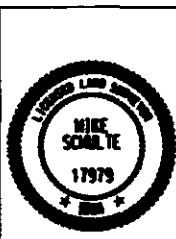
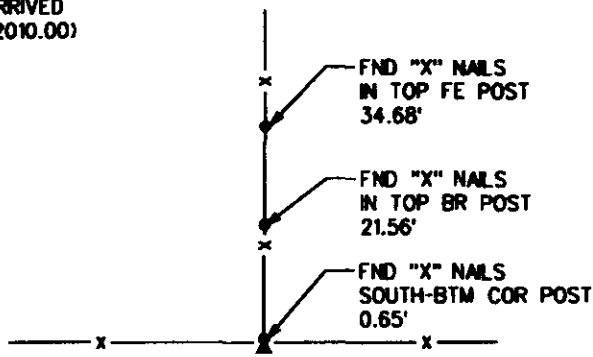
**Plan-View**

(Show a minimum of three reference ties to durable physical objects, relevant monuments and physical conditions that will enable recovery of the corner.)

**CENTER OF SECTION**  
 FOUND 1/2" REBAR - SET YPC #17979



WGS84 - IA RTN DERIVED  
 NAD83(2011)(EPOCH 2010.00)  
 42°00'06.34731"N  
 95°08'25.24763"W



I hereby certify that this land surveying document was prepared and the related surveying work was performed by me or under my direct supervision and that I am a duly Licensed Land Surveyor under the laws of the State of Iowa.  
 Mike Schulte, PLS  
 License Number: 17979  
 My License Renewal Date is October 31, 2013  
 Pages or sheets covered by this work  
 SHEET 1 OF 1

List Corners to be Indexed			
Corners	Section	Twp	Range
CTR SEC	5	83	37