

INDEXED SM
 FOLLOW UP _____
 PROOFED _____
 SCANNED _____

Instrument #: 2016-1879
 09/07/2016 03:23:17 PM Total Pages: 1
 PLC PLAT CORNER CER
 Recording Fee: \$7.00 Transfer Tax: \$0
 Denise Neeves, Recorder, Crawford County Iowa



PREPARED BY & RETURN TO MIKE SCHULTE, SNYDER & ASSOCIATES, INC. 2003 390TH STREET, WESTSIDE, IOWA 51467 (515) 669-1019

UNITED STATES PUBLIC LAND SURVEY CORNER CERTIFICATE OF

Land Survey Monuments situated in Section 14, Township 83 N, Range 37 W, of the Fifth Principal Meridian, CRAWFORD, County, Iowa. Previously recorded in INST 97-2439 in County Recorder's Office. (book, page, document number, ect.)

(Show reason for preparing this certificate, the evidence and detailed procedures used in establishing the corner positions and monumentation found or placed.)

Monument Description and Remarks:

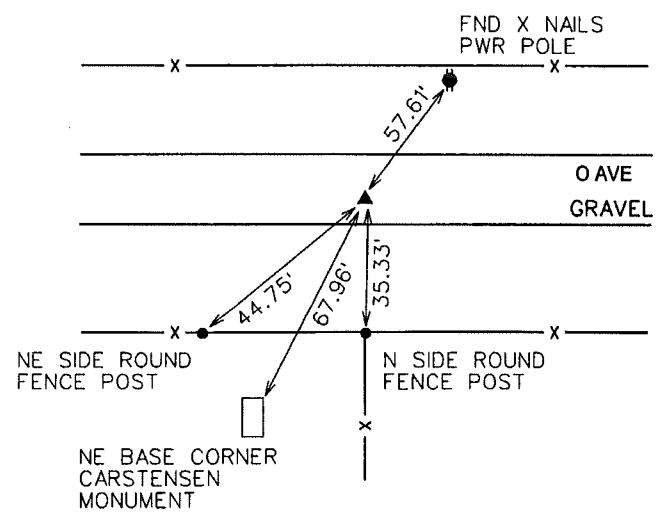
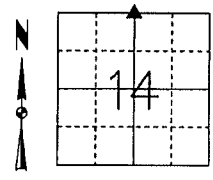
N1/4 CORNER
USED PREVIOUSLY RECORDED TIES TO FIND 1/2" REBAR 3" DEEP AND BENT AT THE TOP, PULLED THE 36" REBAR STRAIGHTENED THE TOP, FLIPPED IT AND RESET WITH YPC #17979 5" DEEP. SOME OF THE TIE DISTANCES HAVE CHANGED SLIGHTLY AND THE MONUMENT HAS BEEN MODIFIED, SO THIS CORNER CERTIFICATE HAS BEEN DEVELOPED TO ILLUSTRATE THOSE CHANGES.

Plan-View

(Show a minimum of three reference ties to durable physical objects, relevant monuments and physical conditions that will enable recovery of the corner.)

IdRCS ZONE 6; US SURVEY FT
 NAD83(2011)(EPOCH 2010.00)
 IOWA RTN DERIVED
 N: 7241470.08
 E: 16666441.94

N1/4 CORNER
FOUND BENT 1/2" REBAR
STRAIGHTENED AND SET YPC 17979



I hereby certify that this land surveying document was prepared and the related survey work was performed by me or under my direct personal supervision and that I am a duly licensed Professional Land Surveyor under the laws of the State of Iowa.
Mike Schulte 2016-09-07
 Mike Schulte, PLS Date
 License Number 17979
 My License Renewal Date is December 31, 2017
 Pages or sheets covered by this seal:
SHEET 1 OF 1

List Corners to be Indexed			
Corners	Section	Twp	Range
N1/4 COR	14	83	37
S1/4 COR	11	83	37