

INDEXED
 FILED UP
 RECORDED

Crawford County Recorder
 Denise Meeves
Fee Book 2008-3091
 11/12/2008 @08:50AM
 PLC PLAT CORNER CER # Pages: 1
 Book: Page: # Pages: 1
 Total Fees: \$7.00

COPY

PREPARED BY & RETURN TO MIKE SCHULTE, SNYDER & ASSOCIATES, INC. 2727 SW SNYDER ROAD, ANKENY, IOWA 50023 (888) 964-2020

UNITED STATES PUBLIC LAND SURVEY CORNER CERTIFICATE OF

Land Survey Monuments situated in Section 14, Township 83 N, Range 37 W, of the Fifth Principal Meridian, CRAWFORD, County, Iowa. Previously recorded in (SEE BELOW) in County Recorder's Office.
 (book, page, document number, ect.)

(Show reason for preparing this certificate, the evidence and detailed procedures used in establishing the corner positions and monumentation found or placed.)

Monument Description and Remarks:

NORTHEAST CORNER SE1/4 NE1/4 SEC 14-83-37
NO CORNER OF RECORD
USED SINGLE PROPORTIONATE METHOD TO SET MAG NAIL IN CENTERLINE OF ASPHALT ROAD

NORTHEAST CORNER SE1/4 SE1/4 SEC 14-83-37
NO CORNER OF RECORD
USED ROW DOCUMENT 98-0138 AND EXISTING FIELD EVIDENCE TO SET MAG NAIL 1' WEST OF CENTERLINE OF ASPHALT ROAD

Plan-View

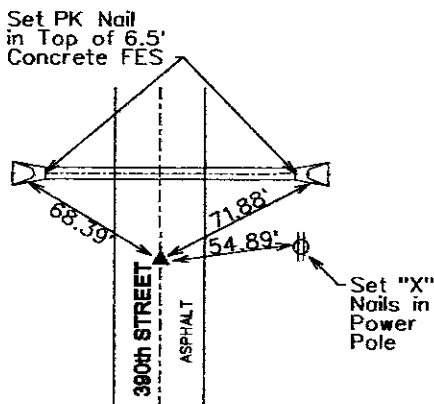
(Show a minimum of three reference ties to durable physical objects, relevant monuments and physical conditions that will enable recovery of the corner.)

NAD83 (1996)
 Lat: 42°00'18.55076"N
 Long: 95°06'40.75279"W

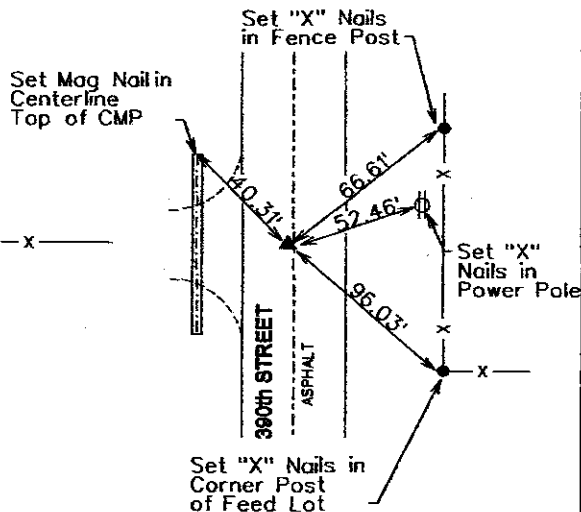
NAD83 (1996)
 Lat: 41°59'52.55910"N
 Long: 95°06'41.05741"W



NORTHEAST CORNER SE1/4 NE1/4
 SET MAG NAIL IN CENTERLINE



NORTHEAST CORNER SE1/4 SE1/4
 SET MAG NAIL 1' WEST OF CENTERLINE



NOTE: ALL DISTANCES MEASURED HORIZONTAL

List Corners to be Indexed

Corners	Section	Twp	Range
NE COR SE NE	14	83	37
NE COR SE SE	14	83	37

PN: 83-37-14-NE COR SE NE & NE COR SE SE 108.0781
 TECH: MLS/SLG DATE: 10/29/08



I hereby certify that this land surveying document was prepared and the related surveying work was performed by me or under my direct supervision and that I am a duly Licensed Land Surveyor under the laws of the State of Iowa.

Mike Schulte 11/12/08
 Mike Schulte, PLS Date

License Number 17979
 My License Renewal Date is December 31, 2009
 Pages or sheets covered by this seal:
 SHEET 1 OF 1