

INSERVED
 11/12/2008 808:48AM
 11/12/2008

COPY

Crawford County Recorder
 Denise Meeves
Fee Book 2008-3089
 11/12/2008 808:48AM
 PLC PLAT CORNER CER
 Book: Page: # Pages: 1
 Total Fees: \$7.00

PREPARED BY & RETURN TO MIKE SCHULTE, SNYDER & ASSOCIATES, INC. 2727 SW SNYDER ROAD, ANKENY, IOWA 50023 (888) 964-2020

UNITED STATES PUBLIC LAND SURVEY CORNER CERTIFICATE OF

Land Survey Monuments situated in Section 14, Township 83 N, Range 37 W, of the Fifth Principal Meridian, CRAWFORD, County, Iowa.
 Previously recorded in (SEE BELOW) in County Recorder's Office.
 (book, page, document number, ect.)

(Show reason for preparing this certificate, the evidence and detailed procedures used in establishing the corner positions and monumentation found or placed.)

Monument Description and Remarks:

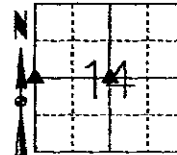
WEST 1/4 CORNER SEC 14-83-37
USED ENGINEERS TIES TO FIND REMAINDER OF CONCRETE MONUMENT, ONLY 4" WERE LEFT OF MONUMENT. POSITION WAS COMPROMISED. EXCAVATED FURTHER TO FIND LIMESTONE AS DESCRIBED IN COUNTY NOTES. LOWERED THE REBAR SET FOR LOCATING PURPOSES & DISCARDED CONCRETE MONUMENT AT EAST CORNER POST. TOP OF STONE 10" DEEP, ALL TIES TO CENTER OF STONE.
CENTER OF SECTION 14-83-37
NO RECORD OF TIES FOUND. USED N, S, E & W 1/4 CORNERS TO VERIFY CENTER OF SECTION POSITION. SET 1/2" REBAR WITH YELLOW CAP #17979 0.3' ABOVE SURFACE

Plan-View

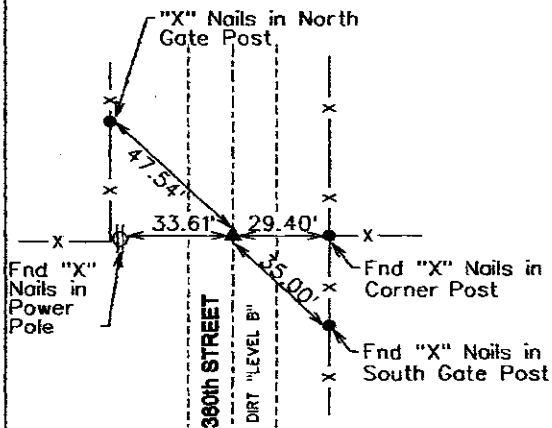
(Show a minimum of three reference ties to durable physical objects, relevant monuments and physical conditions that will enable recovery of the corner.)

NAD83 (1996)
 Lat: 42°80'06.19636"N
 Long: 95°07'50.34362"W

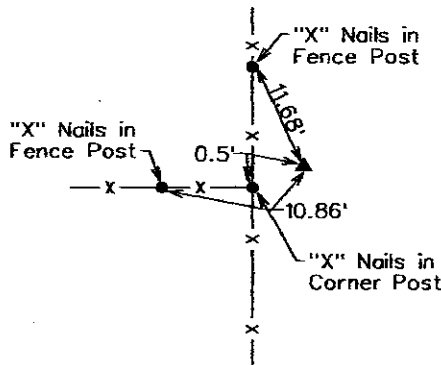
NAD83 (1996)
 Lat: 42°00'05.80262"N
 Long: 95°07'15.80063"W



WEST 1/4 CORNER
 FOUND LIMESTONE 10" DEEP



CENTER OF SECTION
 SET 1/2" REBAR 0.3' ABOVE GROUND



NOTE: ALL DISTANCES MEASURED HORIZONTAL



I hereby certify that this land surveying document was prepared and the related surveying work was performed by me or under my direct supervision and that I am a duly Licensed Land Surveyor under the laws of the State of Iowa.

Mike Schulte 11/07/08
 Mike Schulte, PLS Date

License Number 17979
 My License Renewal Date is December 31, 2008

Pages or sheets covered by this seal:
 SHEET 1 OF 1

List Corners to be Indexed

Corners	Section	Twp	Range
W CORNER	14	83	37
E CORNER	15	83	37
CENTER OF SECTION	14	83	37