

INDEXED _____
 FOLLOW UP _____
 PROOFED _____
 SCANNED _____

Crawford County Recorder
 Denise Reeves
Fee Book 2013-0854
 04/12/2013 @12:03PM
 PLC PLAT CORNER CER # Pages: 1
 Book: Page: \$7.00
 Total Fees:

WARDER C. HILLHOUSE, JR. M.H.F. ENGINEERING P.C., 300 W. MCKINLEY JEFFERSON, IA. (515)386-4101
UNITED STATES PUBLIC LAND SURVEY CORNER CERTIFICATE OF

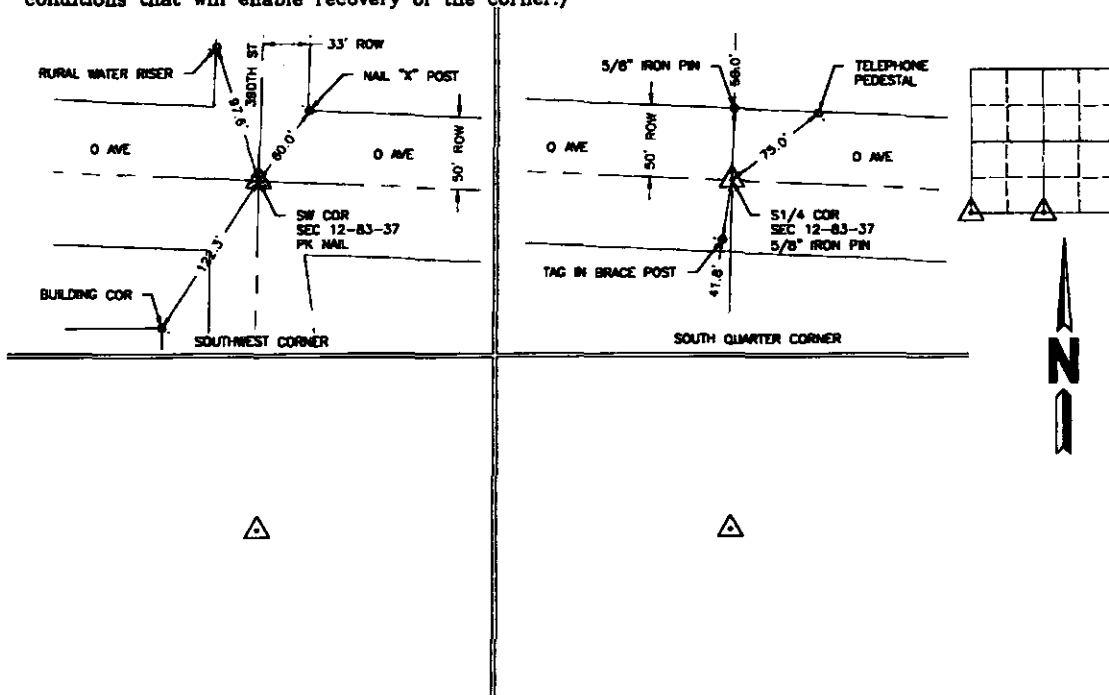
Land Survey Monuments in Section 12, Township 83N, Range 37W, of the Fifth Principal Meridian, CRAWFORD County, Iowa.
 Previously recorded in _____ in County Recorder's Office.
 (book, page, document number, etc.)

(Show reason for preparing this certificate, the evidence and detailed procedures used in establishing the corner positions and monumentation found or placed.)

Monument Description and Remarks:
 CORNER LOCATED FOR SURVEY WORK WITHIN SECTION.

PLAN - VIEW

(Show a minimum of three reference ties to durable physical objects, relevant monuments and physical conditions that will enable recovery of the corner.)



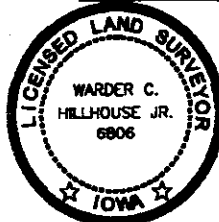
I hereby certify that this land surveying document and the related survey work was performed by me or under my direct personal supervision and that I am a duly licensed land surveyor under the laws of the state of Iowa.

Signature: Warder C. Hillhouse Jr.
 Warder C. Hillhouse, Jr.

Date: 4/09/13 Lic. No. 6806

License Renewal Dec. 31, 2013

Date Surveyed: 4/2013



Seal

List Corners to be Indexed

Corners	Section	Twp	Range
SW CORNER	12	83	37
S1/4 CORNER	12	83	37

File No. 13021



M.H.F. ENGINEERING, P.C.
 ENGINEERS - LAND SURVEYORS
 Jefferson, Iowa 50129 Ph. (515)386-4101