

INDEXED PSM
 FOLLOW UP _____
 PROOFED _____
 SCANNED _____

PREPARED BY & RETURN TO MIKE SCHULTE, SNYDER & ASSOCIATES, INC. 2727 SW SNYDER ROAD, ANKENY, IOWA 50023 (515) 964-2020

UNITED STATES PUBLIC LAND SURVEY CORNER CERTIFICATE OF

Land Survey Monuments situated in Section 1, Township 83, Range 37, of the Fifth Principal Meridian, CRAWFORD, County, Iowa.
 Previously recorded in FEE BOOK 2006-2404 in County Recorder's Office.
 (book, page, document number, ect.)

(Show reason for preparing this certificate, the evidence and detailed procedures used in establishing the corner positions and monumentation found or placed.)

Monument Description and Remarks:

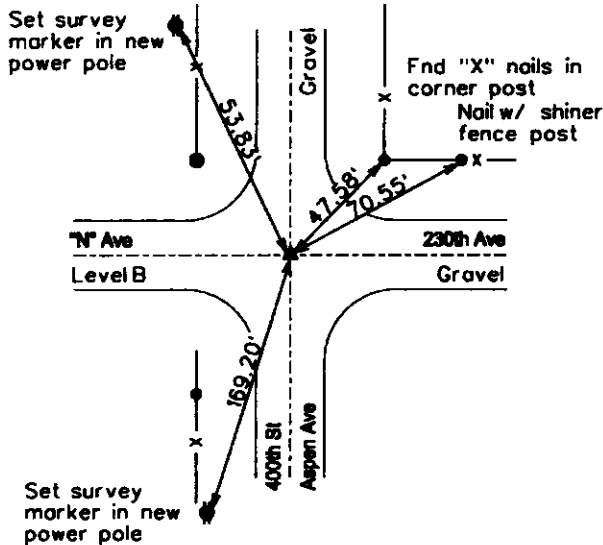
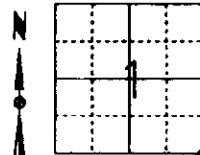
FOUND CONCRETE MONUMENT 1.5' DEEP USING EXISTING TIES SET 1/2" REBAR 1' LONG WITH CAP #17979 OVER EXISTING MONUMENT. TIES TO NEW POLES HAVE CHANGED AND ROAD HAS BEEN LIFTED A LITTLE IN THE PAST FEW YEARS SO A NEW MONUMENT IS PLACED OVER.

Plan-View

(Show a minimum of three reference ties to durable physical objects, relevant monuments and physical conditions that will enable recovery of the corner.)

SPC IA NORTH
 US SURVEY FT
 IA RTN DERIVED
 NAD83 (2011) (EPOCH 2010.00)
 N 3475451.56
 E 4488693.25

SE CORNER
 FND C.M. 1.5' DEEP
 SET 1/2" X 1" REBAR W/ CAP #17979
 OVER EXISTING MONUMENT



LICENSED LAND SURVEYOR
MIKE SCHULTE
 17979
 IOWA

I hereby certify that this land surveying document was prepared and the related surveying work was performed by me or under my direct supervision and that I am a duly Licensed Land Surveyor under the laws of the State of Iowa.

Mike Schulte
 Mike Schulte, PLS Date 2/27/2013

License Number 17979
 My License Renewal Date is December 31, 2013

Pages or sheets covered by this map:
SHEET 1 OF 1

List Corners to be Indexed

Corners	Section	Twp	Range
SE COR	1	83	37
NE COR	12	83	37