

INDEXED \_\_\_\_\_  
 FOLLOW UP \_\_\_\_\_  
 PROOFED \_\_\_\_\_  
 SCANNED \_\_\_\_\_

REC011637



Crawford County Recorder Denise Meeves  
 FEE BOOK 2006-2405 8/18/2006 @ 10:42AM  
 PLC PLAT CORNER CERBook: Page: #: 1  
 Total Fees: \$7.00

PREPARED BY & RETURN TO MICHAEL G. GEIER, SNYDER & ASSOCIATES, INC. 2727 SW SNYDER ROAD, ANKENY, IOWA 50023 (888) 964-2020

### UNITED STATES PUBLIC LAND SURVEY CORNER CERTIFICATE OF

Land Survey Monuments situated in Section 12, Township 83, Range 37, of the Fifth Principal Meridian, CRAWFORD County, Iowa.  
 Previously recorded in N/A in County Recorder's Office.  
 (book, page, document number, ect.)

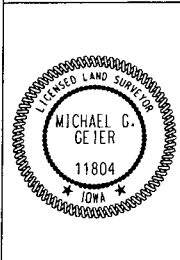
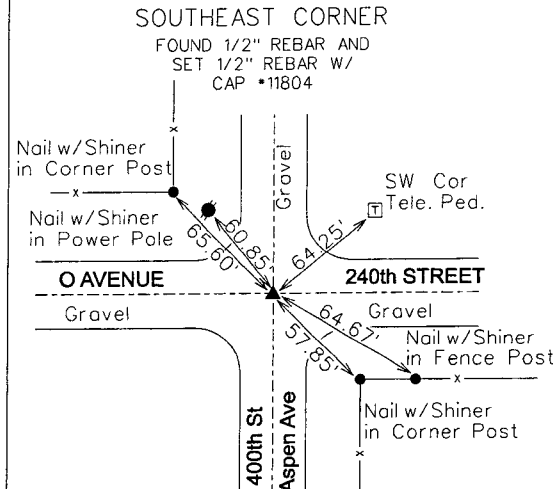
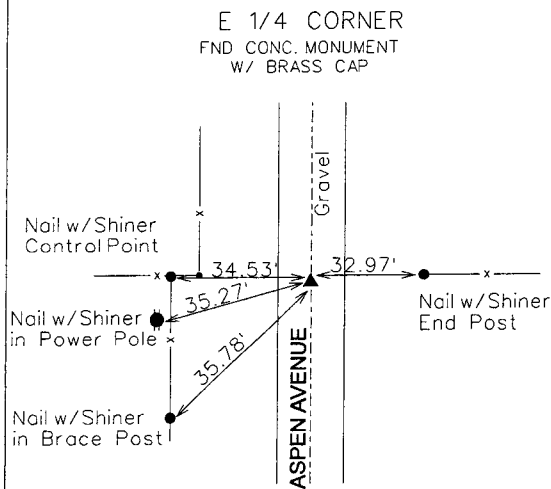
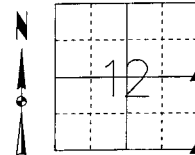
(Show reason for preparing this certificate, the evidence and detailed procedures used in establishing the corner positions and monumentation found or placed.)

**Monument Description and Remarks:**

EAST 1/4 CORNER - FOUND CONCRETE MONUMENT W/ BRASS CAP 3" DEEP AND RETIED CORNER.  
SOUTHEAST CORNER - FOUND 1/2" REBAR 3'DEEP. SET 1/2" REBAR W/ CAP #11804 3" BELOW SURFACE AND RETIED SECTION CORNER.

**Plan-View**

(Show a minimum of three reference ties to durable physical objects, relevant monuments and physical conditions that will enable recovery of the corner.)



I hereby certify that this land surveying document was prepared and the related surveying work was performed by me or under my direct supervision and that I am a duly licensed Land Surveyor under the laws of the State of Iowa.  
*Michael G. Geier* 8-10-06  
 Michael G. Geier, PLS Date  
 License Number 11804  
 My License Renewal Date is December 31, 2007  
 Pages or sheets covered by this seal:  
 SHEET 1 OF 1

List Corners to be Indexed

Corners	Section	Twp	Range
E 1/4 COR	12	83	37
W 1/4 COR	7	83	36
SE COR	12	83	37
SW COR	7	83	36
NW COR	18	83	36
NE COR	13	83	37