

INDEXED                       
 FOLLOW UP                       
 PROOFED                       
 SCANNED                     

REC011629



Crawford County Recorder Denise Meeves  
 FEE BOOK 2006-2397 8/18/2006 @ 10:31AM  
 PLC PLAT CORNER CERBook: Page: #: 1  
 Total Fees: \$7.00

RETURN TO SNYDER & ASSOCIATES, INC. 2727 SW SNYDER ROAD, ANKENY, IOWA 50023 (888) 964-2020

## UNITED STATES PUBLIC LAND SURVEY CORNER CERTIFICATE OF

Land Survey Monuments situated in Section 2, Township 83, Range 37, of the Fifth Principal Meridian, CRAWFORD County, Iowa.  
 Previously recorded in N/A in County Recorder's Office.  
 (book, page, document number, ect.)

(Show reason for preparing this certificate, the evidence and detailed procedures used in establishing the corner positions and monumentation found or placed.)

**Monument Description and Remarks:**

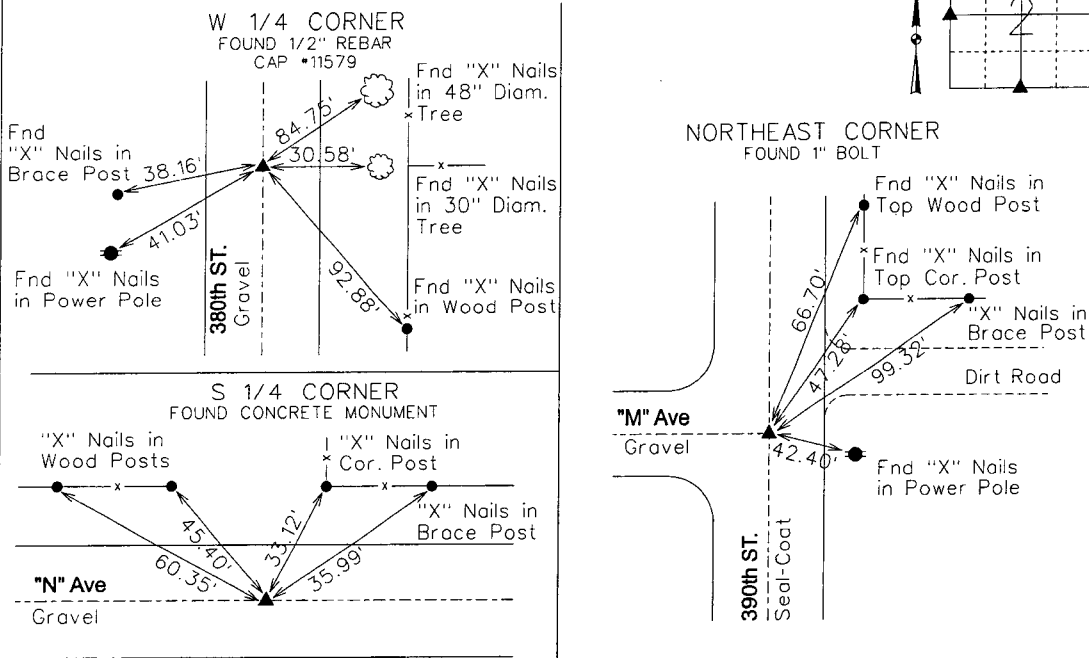
WEST 1/4 CORNER - FOUND 1/2" REBAR CAP #11579 IN Q 380th STREET USING EXISTING TIES AND RETIED SECTION CORNER.

NORTHEAST CORNER - FOUND 1" BOLT IN CENTERLINE 390th STREET USING COUNTY ENGINEER SECTION CORNER TIES AND RETIED SECTION CORNER.

SOUTH 1/4 CORNER - FOUND CONCRETE MONUMENT IN CENTERLINE "N" AVENUE AT SURFACE. NO EXISTING SECTION TIES REMAIN; RETIED SECTION CORNER.

**Plan-View**

(Show a minimum of three reference ties to durable physical objects, relevant monuments and physical conditions that will enable recovery of the corner.)



**List Corners to be Indexed**

Corners	Section	Twp	Range
W 1/4 COR	2	83	37
E 1/4 COR	3	83	37
NE COR	2	83	37
SE COR	35	84	37
SW COR	36	84	37
NW COR	1	83	37
S 1/4 COR	2	83	37
N 1/4 COR	11	83	37

LICENSED LAND SURVEYOR  
 MICHAEL G. GEIER  
 11804  
 IOWA

I hereby certify that this land surveying document was prepared and the related surveying work was performed by me or under my direct supervision and that I am a duly licensed Land Surveyor under the laws of the State of Iowa.

Michael G. Geier 8-10-06  
 Michael G. Geier, PLS Date  
 License Number 11804  
 My License Renewal Date is December 31, 2007

Pages or sheets covered by this seal:  
 SHEET 1 OF 1

TECH: JDP

PN: 83-37-02 (105.1255)

DATE: 04/11/06