



INDEXED _____
FOLLOW UP _____
PROOFED _____
SCANNED _____

Prepared by: Mike Schulte
and RETURN TO SNYDER & ASSOCIATES, INC. 501 SW ORALABOR ROAD, ANKENY, IOWA 50021 (888) 964-2020

UNITED STATES PUBLIC LAND SURVEY CORNER CERTIFICATE OF

Land Survey Monuments situated in Section 03, Township 83, Range 37, of the Fifth Principal Meridian, CRAWFORD, County, Iowa.
Previously recorded in N/A in County Recorder's Office.
(book, page, document number, ect.)

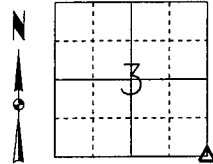
(Show reason for preparing this certificate, the evidence and detailed procedures used in establishing the corner positions and monumentation found or placed.)

Monument Description and Remarks:

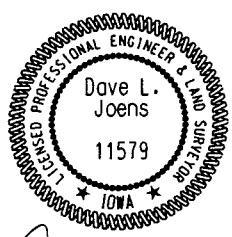
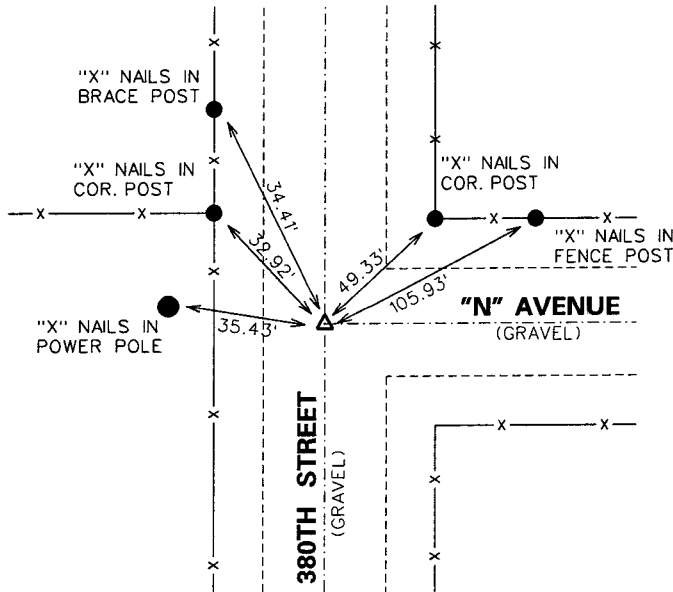
SE CORNER - FOUND 1" IRON PIN 32" DEEP BY USING LOCATOR AND ENGINEERS TIES
SET 1/2" REBAR CAP • 11579 IN CENTERLINE OF 380TH STREET AND "N" AVENUE.

Plan-View

(Show a minimum of three reference ties to durable physical objects, relevant monuments and physical conditions that will enable recovery of the corner.)



SE COR SECTION 3-83-37
SET 1/2" REBAR



I hereby certify that this Engineering or Land Surveying Document was prepared by me or under my direct supervision and that I am a duly Licensed Professional Engineer and Land Surveyor under the Laws of the State of Iowa.

My license renewal date is December 31, 2004
Pages or sheets covered by this seal:
SHEET 1 OF 1

Dave L. Joens
Dave L. Joens, P.E. & PLS
Iowa License No. 11579

8/25/2004
Date

List Corners to be Indexed

Corners	Section	Twp	Range
SE CORNER	03	83	37
SW CORNER	02	83	37
NW CORNER	11	83	37
NE CORNER	10	83	37