

INDEXED DM/aj
 FOLLOW UP W/aj
 PROOFED DM
 SCANNED aj

REC011634



Crawford County Recorder Denise Meeves
 FEE BOOK 2006-2402 8/18/2006 @ 10:39AM
 PLC PLAT CORNER CERBook: Page: #: 1
 Total Fees: \$7.00

PREPARED BY & RETURN TO MICHAEL G. GEIER, SNYDER & ASSOCIATES, INC. 2727 SW SNYDER ROAD, ANKENY, IOWA 50023 (888) 964-2020

UNITED STATES PUBLIC LAND SURVEY CORNER CERTIFICATE OF

Land Survey Monuments situated in Section 10, Township 83, Range 37, of the Fifth Principal Meridian, CRAWFORD County, Iowa.
 Previously recorded in N/A in County Recorder's Office.
 (book, page, document number, ect.)

(Show reason for preparing this certificate, the evidence and detailed procedures used in establishing the corner positions and monumentation found or placed.)

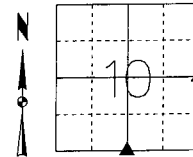
Monument Description and Remarks:

SOUTH 1/4 CORNER - FOUND CONCRETE MONUMENT IN @ "O" AVENUE USING COUNTY ENGINEER SECTION CORNER CERTIFICATES. NO EXISTING TIES REMAIN; RETIED SECTION CORNER.

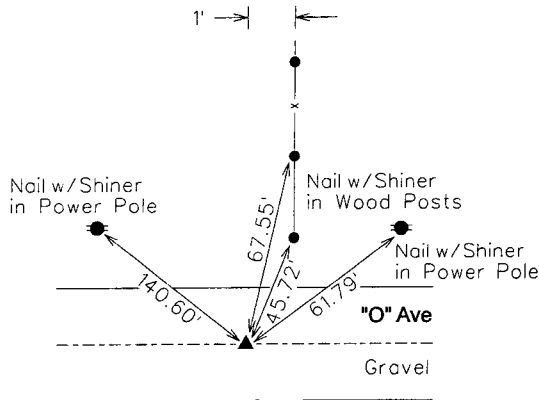
EAST 1/4 CORNER - FOUND 5/8" REBAR IN @ 380th STREET 12" DEEP USING COUNTY ENGINEER SECTION CORNER TIES AND RETIED SECTION CORNER.

Plan-View

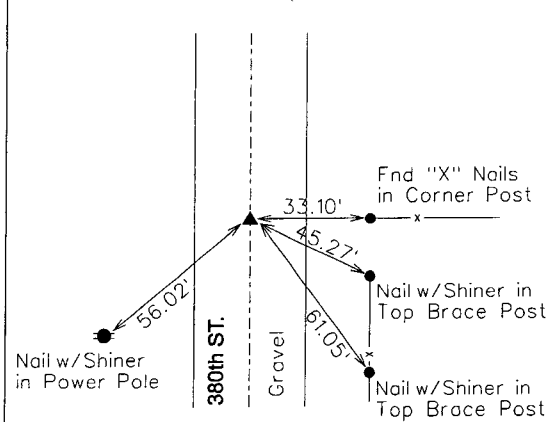
(Show a minimum of three reference ties to durable physical objects, relevant monuments and physical conditions that will enable recovery of the corner.)



**S 1/4 CORNER
 FOUND CONCRETE MONUMENT**



**E 1/4 CORNER
 FOUND 5/8" REBAR**



LICENSED LAND SURVEYOR

MICHAEL G. GEIER

11804

IOWA

I hereby certify that this land surveying document was prepared and the related surveying work was performed by me or under my direct supervision and that I am a duly licensed Land Surveyor under the laws of the State of Iowa.

Michael G. Geier 8-10-06
 Michael G. Geier, PLS Date

License Number 11804
 My License Renewal Date is December 31, 2007

Pages or sheets covered by this seal:
 SHEET 1 OF 1

List Corners to be Indexed

Corners	Section	Twp	Range
S 1/4 COR	10	83	37
N 1/4 COR	15	83	37
E 1/4 COR	10	83	37
W 1/4 COR	11	83	37