

Crawford County Recorder
Denise Meeves
Fee Book 2009-0044
01/07/2009 @10:45AM
PLC PLAT CORNER CER
Book: Page: # Pages: 1
Total Fees: \$7.00

PREPARED BY & RETURN TO MIKE SCHULTE, SNYDER & ASSOCIATES, INC. 2727 SW SNYDER ROAD, ANKENY, IOWA 50023 (888) 964-2020

UNITED STATES PUBLIC LAND SURVEY CORNER CERTIFICATE OF

Land Survey Monuments situated in Section 10, Township 83 N, Range 37 W, of the Fifth Principal Meridian, CRAWFORD County, Iowa.
Previously recorded in (SEE BELOW) in County Recorder's Office.
(book, page, document number, ect.)

(Show reason for preparing this certificate, the evidence and detailed procedures used in establishing the corner positions and monumentation found or placed.)

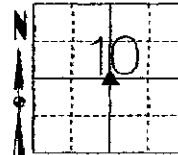
Monument Description and Remarks:

CENTER OF SECTION 10-83-37
NO RECORD OF MONUMENT
PLAT RECORDED IN BOOK 6 SUBDIVIDED E1/2 INTO LOTS BY AREA THAT WERE NEVER TRANSFERRED.
LOT CORNER LABELED AS CENTER WAS SEARCHED FOR: NOT FOUND OR RECOGNIZED.
RESEARCHED MANY ANCIENT MAPS AND AERIAL OF THE AREA. THE SECTION HAS BEEN EITHER
OCCUPIED/FARMED AS W1/2 AND E1/2
SET BY INTERSECTING N1/4, S1/4, E1/4, W1/4 CORNERS
SET 1/2" REBAR WITH A YELLOW CAP #17979 AT GROUND LEVEL

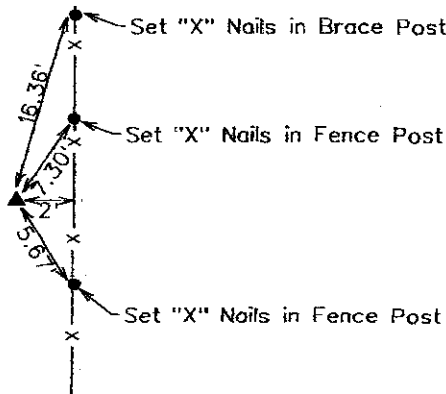
Plan-View

(Show a minimum of three reference ties to durable physical objects, relevant monuments and physical conditions that will enable recovery of the corner.)

NAD83 (1996)
LAT: 42°00'58.26930"N
LONG: 95°08'24.43512"W



CENTER OF SECTION
SET 1/2" REBAR W/ YELLOW CAP #17979



NOTE: ALL DISTANCES MEASURED HORIZONTAL



I hereby certify that this land surveying document was prepared and the related surveying work was performed by me or under my direct supervision and that I am a duly Licensed Land Surveyor under the laws of the State of Iowa.
Mike Schulte 1/07/09
Mike Schulte, PLS Date
License Number 17979
My License Renewal Date is December 31, 2009
Pages or sheets covered by this seal:
SHEET 1 OF 1

List Corners to be Indexed

Corners	Section	Twp	Range
CENTER OF SECTION	10	83	37