

INDEXED
 FOLLOW UP
 PROOFED
 SCANNED

PREPARED BY - JOSEPH P. RUESCHENBERG - SUNDQUIST ENGINEERING - 120 S. MAIN, DENISON, IOWA 51442 - PHONE (712) 263-8118

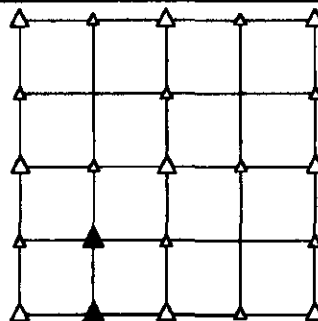
UNITED STATES PUBLIC LAND SURVEY CORNER CERTIFICATE
OF

LAND SURVEY MONUMENT SITUATED IN SECTION 5, T 84 N, R 40 W OF
 THE 5TH P.M., CRAWFORD COUNTY, IOWA.
 PREVIOUSLY RECORDED IN BOOK _____, PAGE _____, OTHER _____

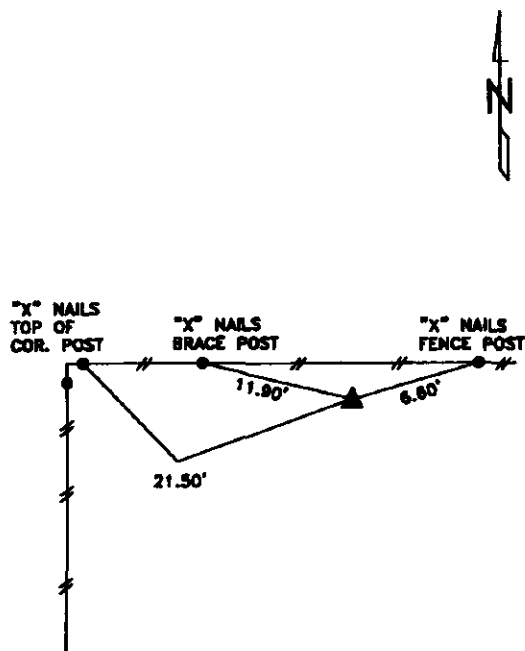
MONUMENT DESCRIPTION AND REMARKS

NE CORNER
 SW1/4 SW1/4 - SET 5/8" DIA. X 18" IRON PIN W/ORANGE CAP
 #14709 FLUSH. CORNER IS 22.0' EAST OF N-S
 FENCE & 4.0' SOUTH OF E-W FENCE.

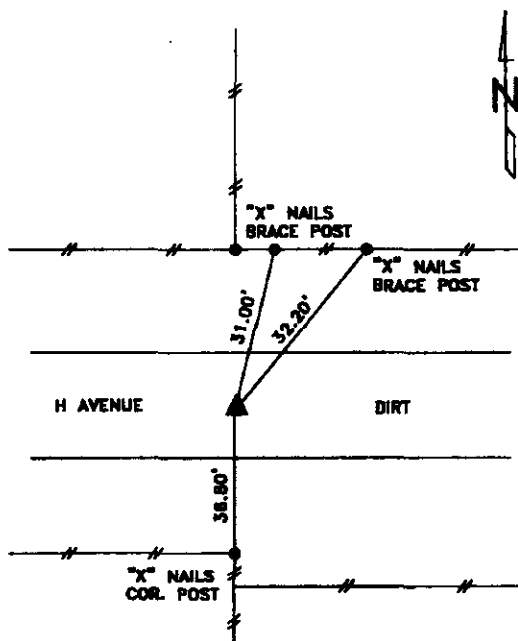
SE CORNER
 SW1/4 SW1/4 - SET 5/8" DIA. X 18" IRON PIN W/ORANGE CAP
 #14709 0.4' DEEP. SET ON LINE & AT SPLIT
 BETWEEN SW COR. & S1/4 COR. OF SEC. 5.



PLAN VIEW SHOWING RELATIVE LOCATION OF MONUMENT AND REFERENCE POINTS.



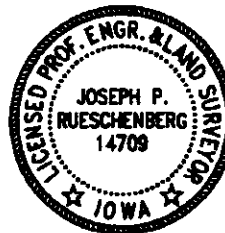
DISTANCES PLUMB CHAINED
 NE CORNER SW1/4 SW1/4
 SECTION 5-84-40



DISTANCES PLUMB CHAINED
 SE CORNER SW1/4 SW1/4
 SECTION 5-84-40

I HEREBY CERTIFY THAT THIS LAND SURVEYING DOCUMENT WAS PREPARED
 AND THE RELATED SURVEY WORK WAS PERFORMED BY ME OR UNDER MY
 DIRECT PERSONAL SUPERVISION AND THAT I AM A DULY LICENSED LAND
 SURVEYOR UNDER THE LAWS OF THE STATE OF IOWA.

Joseph P. Rueschenberg 9-13-2013
 JOSEPH P. RUESCHENBERG DATE
 IA LICENSE NO. 14709 EXP. DATE DECEMBER 31, 2014



SE PROJECT NO. 22913
 DRAWN BY: LLL