

RECORDED
 INDEXED
 FILED
 JUN 4 2004
 CRAWFORD COUNTY IOWA

This document prepared by : Semke & Associates - 712-792-2276
 Micheal G. Semke, L.S. #10318 - 716 N. Crawford St. - Carroll, Iowa

UNITED STATES PUBLIC LAND SURVEY CORNER CERTIFICATE
 OF

Land Survey Monuments situated in Section 6, Township 84 North, Range 40
 West, of the Fifth Principal Meridian, Crawford County, Iowa.
 Previously recorded in Book , Page in County Recorder's Office.

(Show reason for preparing this certificate, the evidence and detailed procedures used in establishing the corner positions and monumentation found or placed.)

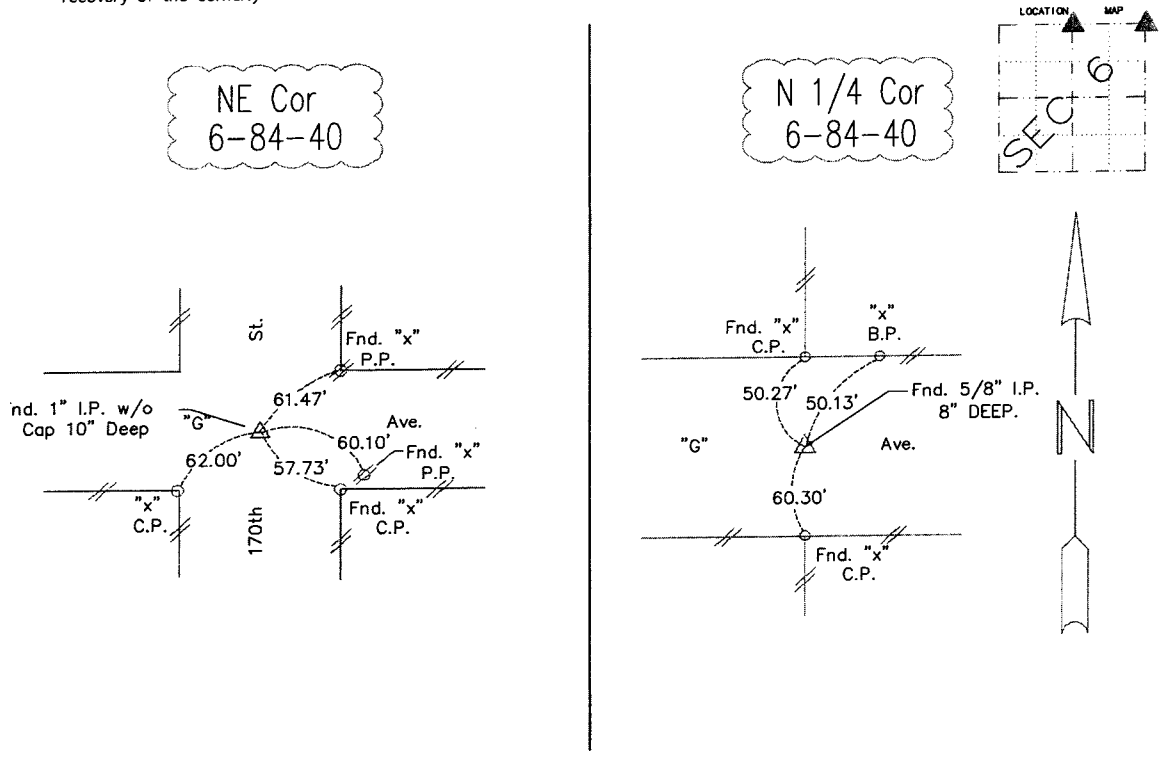
N 1/4 Corner Fnd. 5/8" I.P. w/o Cap 8" Deep
 Rasied to 2" w/ 1/2" I.P.

NE Corner Fnd. 1" I.P. w/o Cap 10" Deep
 Rasied to 2" w/ 1/2" I.P.

Note: All pins set are 1/2" x 24" Rerod w/Yellow Cap #10318 unless noted otherwise.

PLAN - VIEW

(Show a minimum of three reference ties to durable physical objects, relevant monuments and physical conditions that will enable recovery of the corner.)



Note: all ties slope chained unless noted otherwise.

I HEREBY CERTIFY THAT THIS LAND SURVEYING DOCUMENT AND RELATED SURVEY WORK WAS PERFORMED BY ME OR UNDER MY DIRECT PERSONAL SUPERVISION AND THAT I AM A DULY LICENSED LAND SURVEYOR UNDER THE LAWS OF THE STATE OF IOWA.

Micheal G. Semke 6/4/04
 Signature Date

Micheal G. Semke, L.S. No. 10318
 Printed of Typed Name

Pages of sheets covered by this seal THIS PAGE My license is subject to renewal 12/31/05.

List Corners to be Indexed

| Corners | Section | Twp | Range |
|-----------|---------|-----|-------|
| N 1/4 Cor | 6 | 84 | 40 |
| S 1/4 Cor | 31 | 85 | 40 |
| NE Cor | 6 | 84 | 40 |
| SE Cor | 31 | 85 | 40 |
| SW Cor | 32 | 85 | 40 |
| NW Cor | 5 | 84 | 40 |