

Crawford County Recorder
Denise Meeves
Fee Book 2012-0082
01/12/2012 @11:11AM
PLC PLAT CORNER CER
Book: Page: # Pages: 1
Total Fees: \$7.00

PLC
PLAT
CORNER CER
Book: Page: # Pages: 1
Total Fees: \$7.00

Prepared by: Nathan H. Carlson Address: 3701 12th Street N, Suite 206, Phone: 320-253-9495
St. Cloud, MN 56303

UNITED STATES PUBLIC LAND SURVEY CORNER CERTIFICATE FOR

Land survey monuments situated in Section 5, Township 84 N

Range 40 W, of the Fifth Principal Meridian, Crawford County, Iowa.

Previously recorded in _____ in County Recorder's Office.

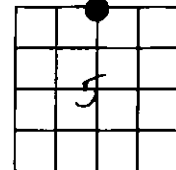
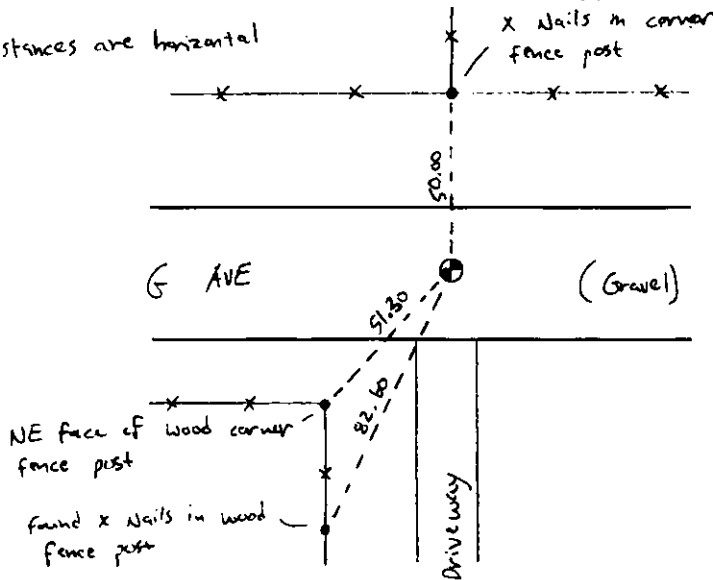
(Show reason for preparing this certificate, the evidence and detailed procedures used in establishing the corner positions & monumentation found or placed.)

MONUMENT DESCRIPTION AND REMARKS: Found 1" Rebar + three ties from
old field book notes dated 3/28/78. I am filling a new
corner record because there isn't a modern corner record
on file.

PLAN - VIEW

(Show a minimum of three reference ties to durable physical objects, relevant monuments and physical conditions that will enable recovery of the corner.)

All distances are horizontal



SEAL



I hereby certify that this land surveying document was prepared and the related survey work was performed by me or under my direct personal supervision and that I am a duly licensed Land Surveyor under the laws of the State of Iowa.

Nathan H. Carlson 1/4/2012
Signature Date

Typed/Printed Name: Nathan H. Carlson

License Number: 19314

My license renewal date is December 31, 2012.

Pages or sheets covered by this seal: This sheet

Corners to be Indexed

Corners	Section	Twp.	Range
$N \frac{1}{4}$	5	84 N	40 W