

INDEXED
 FOLLOW UP
 PROOFED
 SCANNED

Crawford County Recorder
 Denise Meeves
Fee Book 2010-1003
 05/19/2010 @03:10PM
 PLC PLAT CORNER CER # Pages: 1
 Book: Page: \$9.00
 Total Fees:

PREPARED BY - JOSEPH P. RUESCHENBERG - SUNDQUIST ENGINEERING - 120 S. MAIN, DENISON, IOWA 51442 - PHONE (712) 263-8118

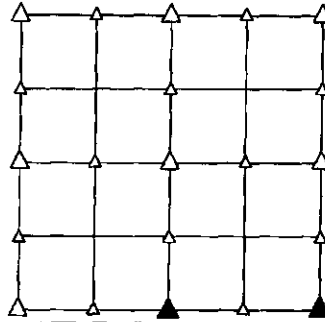
UNITED STATES PUBLIC LAND SURVEY CORNER CERTIFICATE
OF

LAND SURVEY MONUMENT SITUATED IN SECTION 33 , T 85 N, R 40 W OF
 THE 5TH P.M., CRAWFORD COUNTY, IOWA.
 PREVIOUSLY RECORDED IN BOOK , PAGE , OTHER

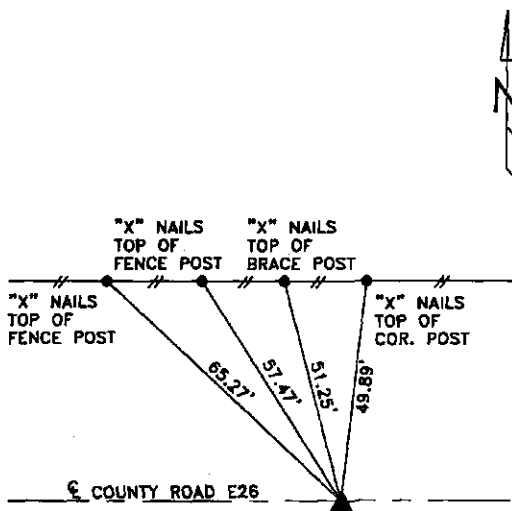
MONUMENT DESCRIPTION AND REMARKS

S1/4 CORNER - FOUND IRON PIN W/YELLOW CAP #8893 0.3' DEEP.

SE CORNER - FOUND BROKEN CM 0.5' DEEP, SET 5/8" DIA. IRON
 PIN ON SOUTH SIDE OF CM FOR LOCATING.

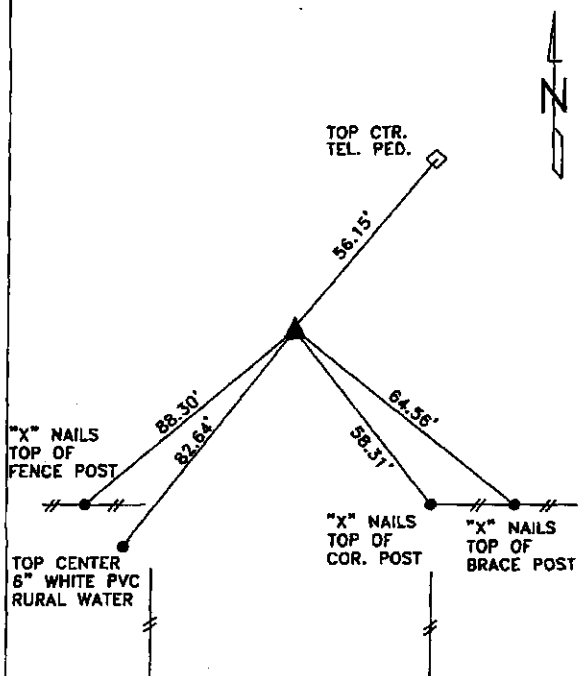


PLAN VIEW SHOWING RELATIVE LOCATION OF MONUMENT AND REFERENCE POINTS.



DISTANCES PLUMB CHAINED

S1/4 CORNER SECTION 33-85-40

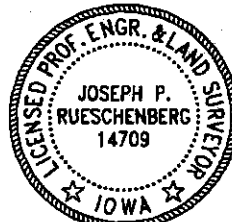


DISTANCES PLUMB CHAINED

SE CORNER SECTION 33-85-40

I HEREBY CERTIFY THAT THIS LAND SURVEYING DOCUMENT WAS PREPARED
 AND THE RELATED SURVEY WORK WAS PERFORMED BY ME OR UNDER MY
 DIRECT PERSONAL SUPERVISION AND THAT I AM A DULY LICENSED LAND
 SURVEYOR UNDER THE LAWS OF THE STATE OF IOWA.

Joseph P. Rueschenberg APR 06 2010
 JOSEPH P. RUESCHENBERG DATE
 IA LICENSE NO. 14709 EXP. DATE DECEMBER 31, 2010



SE PROJECT NO. 20610
 DRAWN BY: LLL