

RECORDED DM
 FILED DM
 INDEXED DM
 SERIALIZED DM

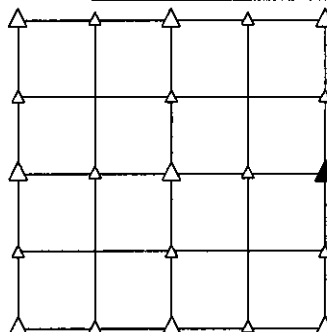
PREPARED BY - JOSEPH P. RUESCHENBERG - SUNDUQUIST ENGINEERING - 120 S. MAIN, DENISON, IOWA 51442 - PHONE (712) 263-8118

**UNITED STATES PUBLIC LAND SURVEY CORNER CERTIFICATE
 OF**

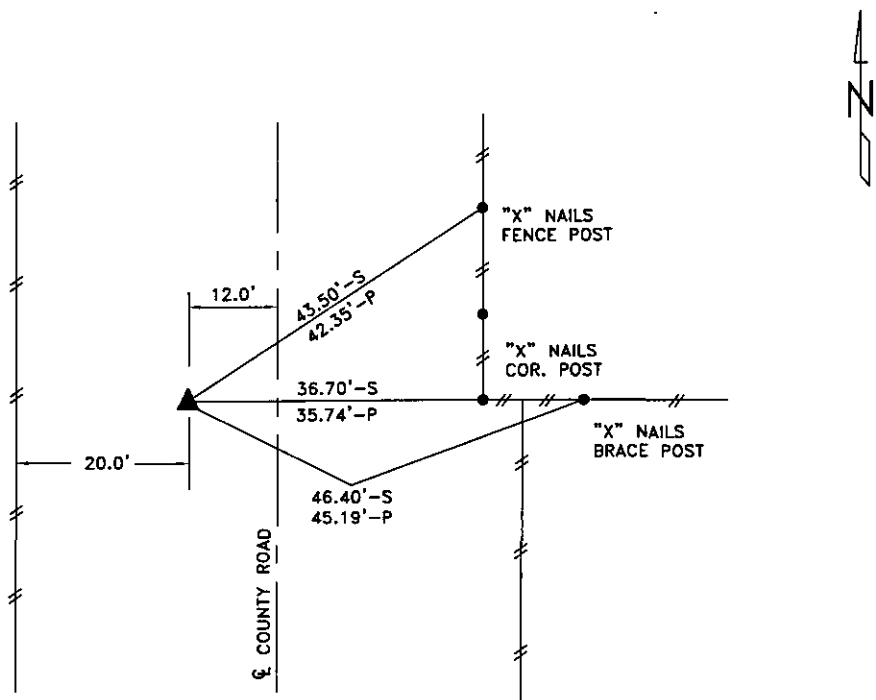
LAND SURVEY MONUMENT SITUATED IN SECTION 36, T 84 N, R 40 W OF
 THE 5TH P.M., CRAWFORD COUNTY, IOWA.
 PREVIOUSLY RECORDED IN BOOK _____, PAGE _____, OTHER _____

MONUMENT DESCRIPTION AND REMARKS

E1/4 CORNER - SET 5/8" DIA. X 18" IRON PIN W/ORANGE CAP
 #14709 6" DEEP, RESET FROM OLD COUNTY TIES.



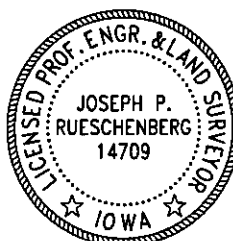
PLAN VIEW SHOWING RELATIVE LOCATION OF MONUMENT AND REFERENCE POINTS.



46.40'-S DISTANCES SLOPE CHAINED
 45.19'-P DISTANCES PLUMB CHAINED
E1/4 CORNER SECTION 36-84-40

I HEREBY CERTIFY THAT THIS LAND SURVEYING DOCUMENT WAS PREPARED
 AND THE RELATED SURVEY WORK WAS PERFORMED BY ME OR UNDER MY
 DIRECT PERSONAL SUPERVISION AND THAT I AM A DULY LICENSED LAND
 SURVEYOR UNDER THE LAWS OF THE STATE OF IOWA.

Joseph P. Rueschenberg **SEP 15 2009**
 JOSEPH P. RUESCHENBERG DATE
 IA LICENSE NO. 14709 EXP. DATE DECEMBER 31, 2010



SE PROJECT NO. 20509
 DRAWN BY: LLL