

Crawford County Recorder  
 Denise Meeves  
**Fee Book 2012-0083**  
 01/12/2012 @ 11:11AM  
 PLC PLAT CORNER CER # Pages: 1  
 Book: Page: \$7.00  
 Total Fees:

SEARCHED  
 INDEXED  
 SERIALIZED

Prepared by: Nathan H. Carlson Address: 3701 12th Street N, Suite 206, Phone: 320-253-9495  
St. Cloud, MN 56303

**UNITED STATES PUBLIC LAND SURVEY CORNER CERTIFICATE FOR**

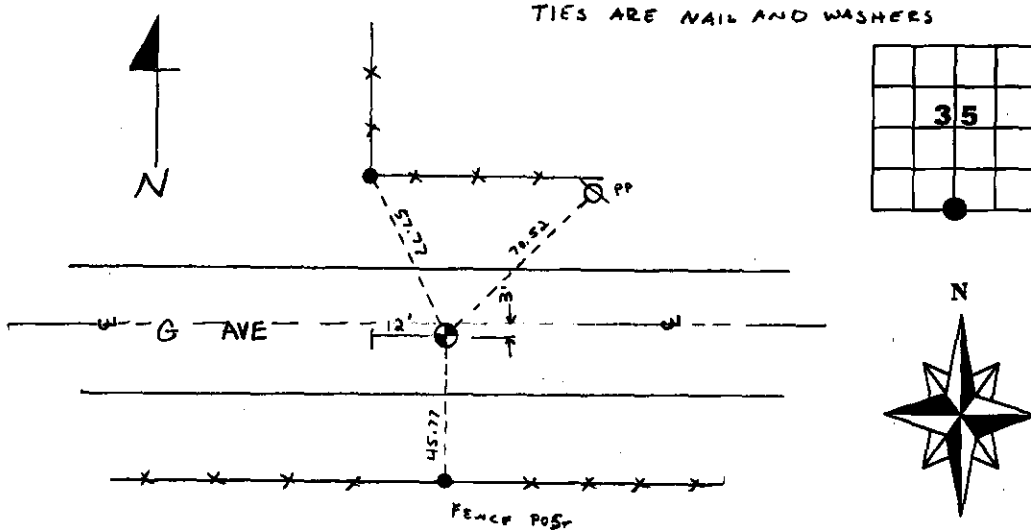
Land survey monuments situated in Section 35, Township 85N  
40W, of the Fifth Principal Meridian, Crawford County, Iowa.  
 Previously recorded in Doc. No. 79-370 in County Recorder's Office.

(Show reason for preparing this certificate, the evidence and detailed procedures used in establishing the corner positions & monumentation found or placed.)

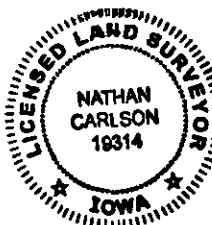
**MONUMENT DESCRIPTION AND REMARKS:** Searched with a metal locator and found a 5/8" rebar down 1.0 feet. The found rebar falls 3' south of traveled centerline and 12' east of the existing fence line north. Measured a distance of 2643.54 feet to the southwest corner of Section 35. Easement Document No. 79-370 indicates a measurement of 2643.9 feet from the southwest corner of Section 35 to the south quarter corner. Accepted the found monument and established reference ties as noted below.

**PLAN - VIEW**

(Show a minimum of three reference ties to durable physical objects, relevant monuments and physical conditions that will enable recovery of the corner.)



SEAL



SLSI-3/98

I hereby certify that this land surveying document was prepared and the related survey work was performed by me or under my direct personal supervision and that I am a duly licensed Land Surveyor under the laws of the State of Iowa.

Nathan H. Carlson 1/4/2012  
 Signature Date

Typed/Printed Name: Nathan H. Carlson

License Number: 19314

My license renewal date is December 31, 2012

Pages or sheets covered by this seal: This sheet

Corners to be Indexed

Corners	Section	Twp.	Range
S1/4	35	85N	40W