

INDEXED _____
FOLLOW UP _____
PROOFED _____
SEARCHED _____

WILKE LAND SURVEYING INC. 401 1800th Street Panama, Iowa 51562 (712)489-2898

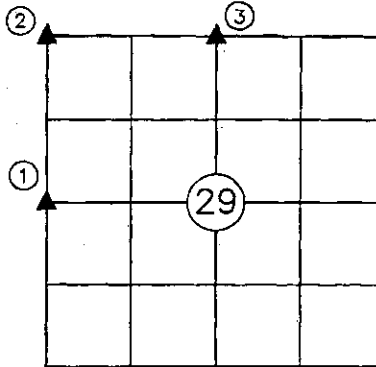
UNITED STATES PUBLIC LAND SURVEY CORNER CERTIFICATE

SECTION 29 TOWNSHIP 84N RANGE 40W COUNTY CRAWFORD

Certificate Prepared For: THERE IS NO RECORD CORNER CERTIFICATES

Monument Description and Remarks:

- ① - Found 5/8" dia. iron pin (0.5' deep) over concrete monument (2.9' deep) using information from the Crawford County Engineer's Office.
- ② - Found 5/8" dia. iron pin (1.5' deep) using information from the Crawford County Engineer's Office.
- ③ - Found 1" dia. iron pin (1.1' deep) over concrete monument using information from the Crawford County Engineer's Office.



LICENSED LAND SURVEYOR

DEAN A. WILKE

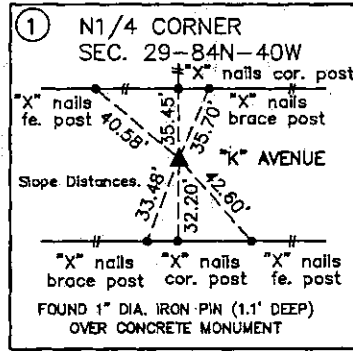
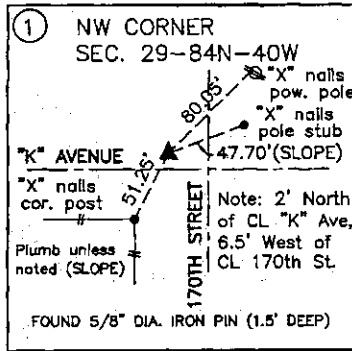
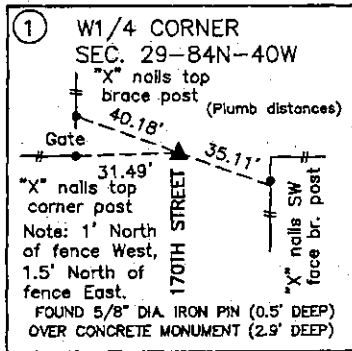
17048

IOWA

I hereby certify that this land surveying document was prepared and the related survey work was performed by me or under my direct personal supervision and that I am a duly licensed Land Surveyor under the laws of the State of Iowa.

Dean A. Wilke 9/09/09
Dean A. Wilke Date

License number 17048
My license renewal date is December 31, 2009
Pages or sheets covered by this seal: This page only.



List Corners to be Indexed			
Corner	Section	Twp.	Range
W1/4 CORNER	29	84N	40W
NW CORNER	29	84N	40W
N1/4 CORNER	29	84N	40W