

INDEXED ME
FOLLOW UP ag
PROOFED ag
SCANNED ME

REC009817



Crawford County Recorder Denise Meeves
FEE BOOK 2006-0777 3/23/2006 @ 02:20PM
PLC PLAT CORNER CER Book: Page: #: 1
Total Fees: \$7.00

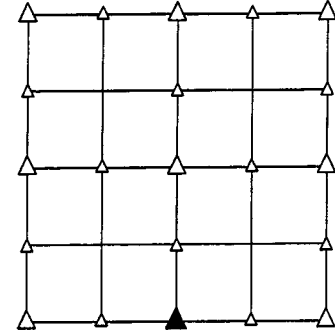
PREPARED BY - TERENCE E. CRAWFORD - SUNDQUIST ENGINEERING - 120 S. MAIN, DENISON, IOWA 51442 - PHONE (712) 263-8118

UNITED STATES PUBLIC LAND SURVEY CORNER CERTIFICATE OF

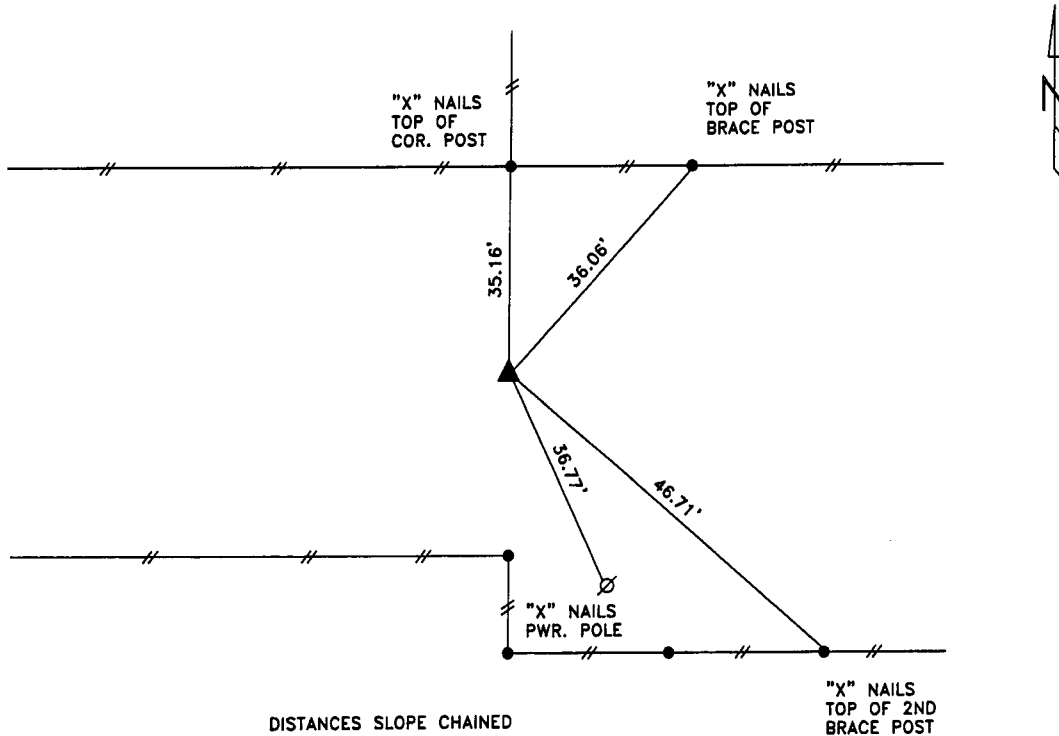
LAND SURVEY MONUMENT SITUATED IN SECTION 22, T 84 N, R 40 W OF
THE 5TH P.M., CRAWFORD COUNTY, IOWA.
PREVIOUSLY RECORDED IN BOOK _____, PAGE _____, OTHER _____

MONUMENT DESCRIPTION AND REMARKS

S1/4 CORNER - FOUND 1/2" BOLT HEAD 2.5' DEEP, RAISED WITH
5/8" DIA. X 18" IRON PIN W/YELLOW CAP #8893
0.5' DEEP OVER BOLT.



PLAN VIEW SHOWING RELATIVE LOCATION OF MONUMENT AND REFERENCE POINTS.



S1/4 CORNER SECTION 22-84-40

I HEREBY CERTIFY THAT THIS LAND SURVEYING DOCUMENT WAS PREPARED
AND THE RELATED SURVEY WORK WAS PERFORMED BY ME OR UNDER MY
DIRECT PERSONAL SUPERVISION AND THAT I AM A DULY LICENSED LAND
SURVEYOR UNDER THE LAWS OF THE STATE OF IOWA.

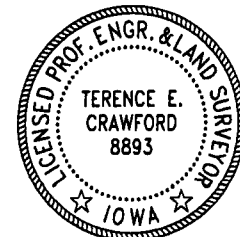
Terence E. Crawford
TERENCE E. CRAWFORD

IA LICENSE NO. 8893

MAR 14 2006

DATE

EXP. DATE DECEMBER 31, 2007



SE PROJECT NO. 20906
DRAWN BY: LLL