

WORKED \_\_\_\_\_  
 FOLLOW UP \_\_\_\_\_  
 PROVED \_\_\_\_\_  
 SIGNED \_\_\_\_\_

Crawford County Recorder  
 Denise Meeves  
**Fee Book 2009-0221**  
 01/30/2009 @01:49PM  
 PLC PLAT CORNER CER  
 Book: Page: # Pages: 1  
 Total Fees: \$7.00

WILKE LAND SURVEYING INC. 401 1800th Street Panama, Iowa 51562 (712)489-2898

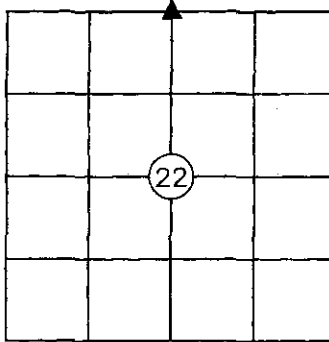
**UNITED STATES PUBLIC LAND SURVEY CORNER CERTIFICATE**

SECTION 22 TOWNSHIP 84N RANGE 40W COUNTY CRAWFORD

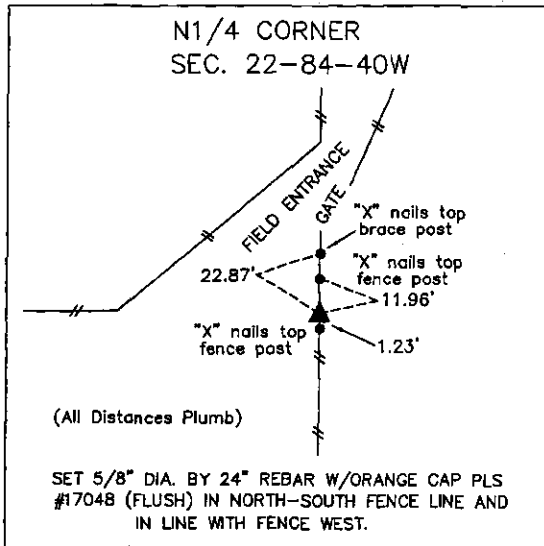
Certificate Prepared For: Survey of the North line of the NE1/4  
 (There is no record corner certificate for this corner)

Monument Description and Remarks:

No Corner Certificate has been filed for this corner and the WPA field notes dated July 13, 1939 show that they dug for this corner and nothing was found and no monument was set. Surveyed in the Northwest Corner and the Northeast Corner of the Section and checked to see how a straight line between them compared with the fence intersection at the N1/4 Corner. The line was over 6' North of the fence corner. Local evidence was used to monument the corner as a 5/8" dia. by 24" rebar w/orange cap PLS #10748 was set (flush) in the North-South fence and in line with a projection of the fence West.



	I hereby certify that this land surveying document was prepared and the related survey work was performed by me or under my direct personal supervision and that I am a duly licensed Land Surveyor under the laws of the State of Iowa.
	<i>Dean A. Wilke</i> 1/30/09 Dean A. Wilke Date
	License number 17048 My license renewal date is December 31, 2009 Pages or sheets covered by this seal: This page only



List Corners to be Indexed			
Corner	Section	Twp.	Range
N1/4 CORNER	22	84N	40W