

Crawford County Recorder  
Denise Meeves  
**Fee Book 2013-1634**  
07/12/2013 @ 11:15AM  
PLC PLAT CORNER CER  
Book: Page: # Pages: 1  
Total Fees: \$7.00

PREPARED BY - JAMES C. SAILER - IDOT, P.O.B. 987, SIOUX CITY IOWA 51102-0987 PHONE (712) 276-1451



**UNITED STATES PUBLIC LAND SURVEY CORNER CERTIFICATE**  
OF



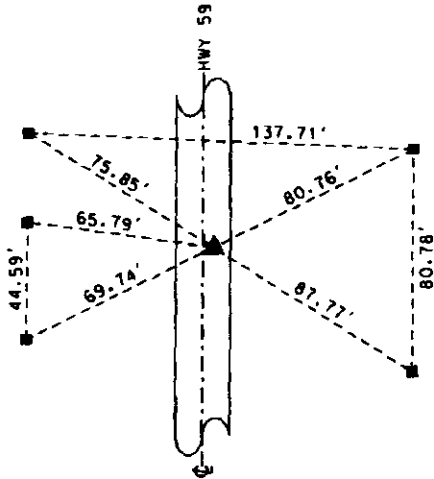
Land Survey Monument Situated in Section 1,  
Township 84 NORTH, Range 40 WEST Of The Fifth Principal Meridian,  
CRAWFORD County, Iowa. Previously Recorded In \_\_\_\_\_  
In The County Recorder's Office.

Monument Description and Remarks:

- ① E 1/4 CORNER SEC 1-84-40. FOUND PK NAIL IN ACC. SET IDOT BRONZE DISK W/ CUT TRIANGLE IN NEW ASPHALT OVERLAY
- ② NE CORNER SEC 1-84-40. FOUND IDOT ALUM DISK IN ACC. SET IDOT BRONZE DISK W/ CUT TRIANGLE IN NEW ASPHALT OVERLAY

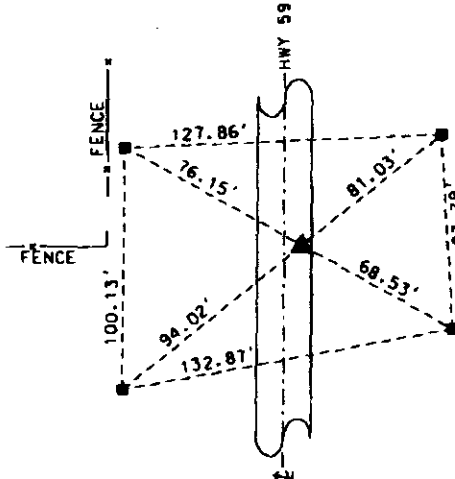
PLAN - VIEW

① E 1/4 CORNER SEC 1-84-40



■ = CONCRETE MONUMENT

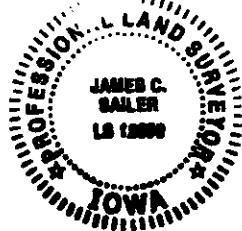
② NE CORNER SEC 1-84-40



■ = CONCRETE MONUMENT

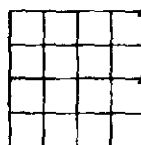
I hereby certify that this land surveying document was prepared and the related survey work was performed by me or under my direct personal supervision and that I am a duly licensed Professional Land Surveyor under the Laws of the State of Iowa.

Signature: *James C. Sailer* Date: *7/12/13*  
James C. Sailer - Lic. No. 12090



My License Renewal Date is December 31, 2014  
Pages or sheets covered by this seal: 1

IOWA DEPARTMENT OF TRANSPORTATION  
CRAWFORD COUNTY FIELD BOOK 1, PAGE 83-84  
CERTIFICATE NUMBER 24-03



DATE: 06/10/2013 BY: CDH

Corner	Section	Twp	Range
NORTH EAST	1	84	40
EAST 1/4	1	84	40